



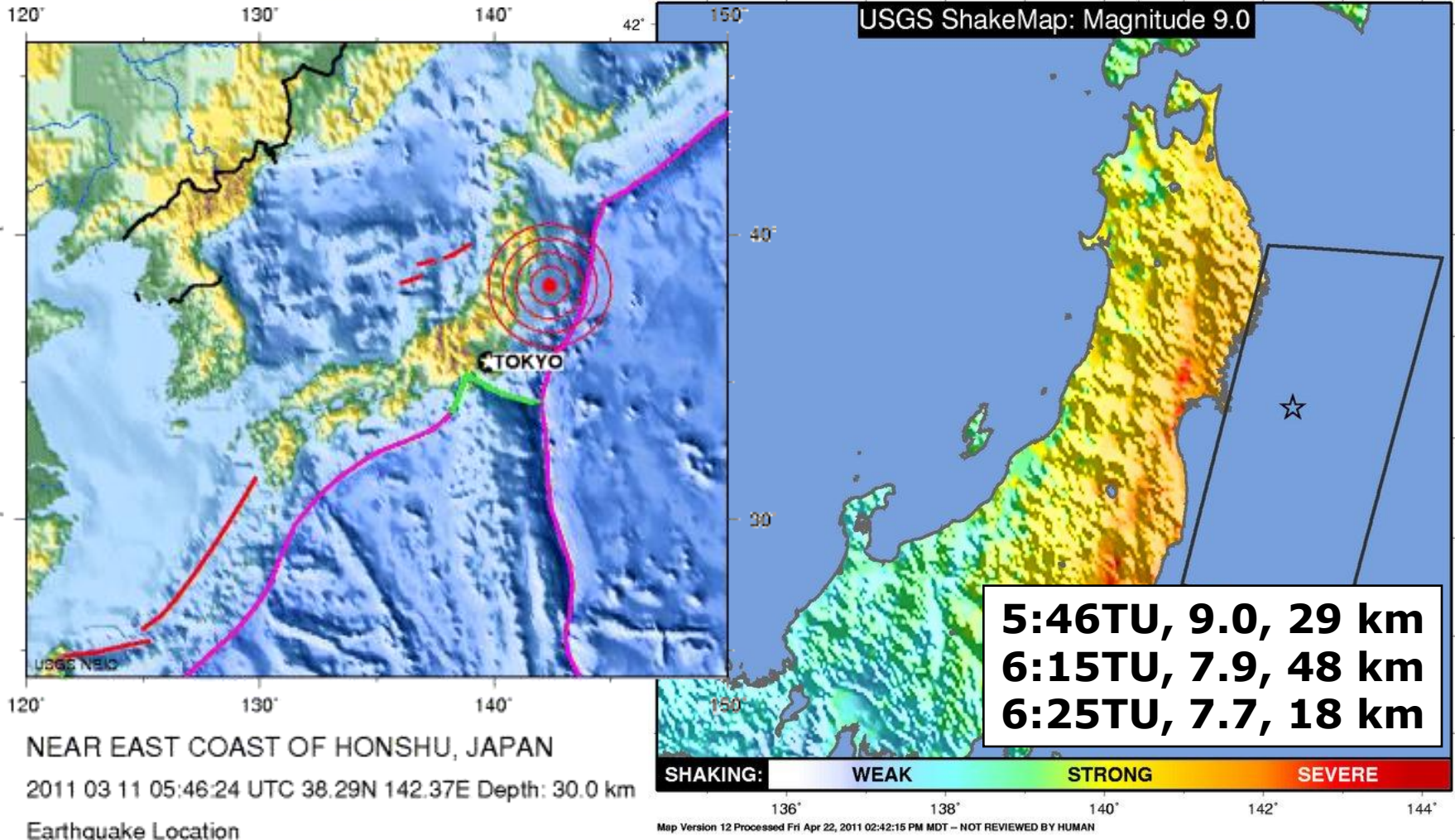
AGH UNIVERSITY OF SCIENCE
AND TECHNOLOGY

Wykorzystanie systemu ASG-EUPOS do badania zjawisk geodynamicznych na przykładzie trzęsienia Ziemi w rejonie Honsiu, Japonia

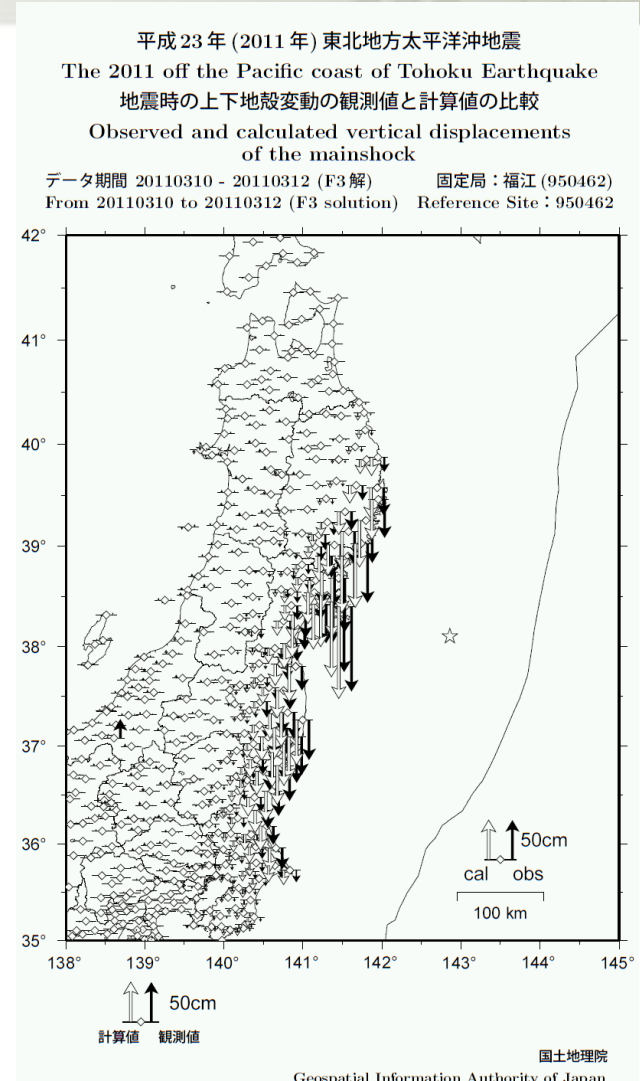
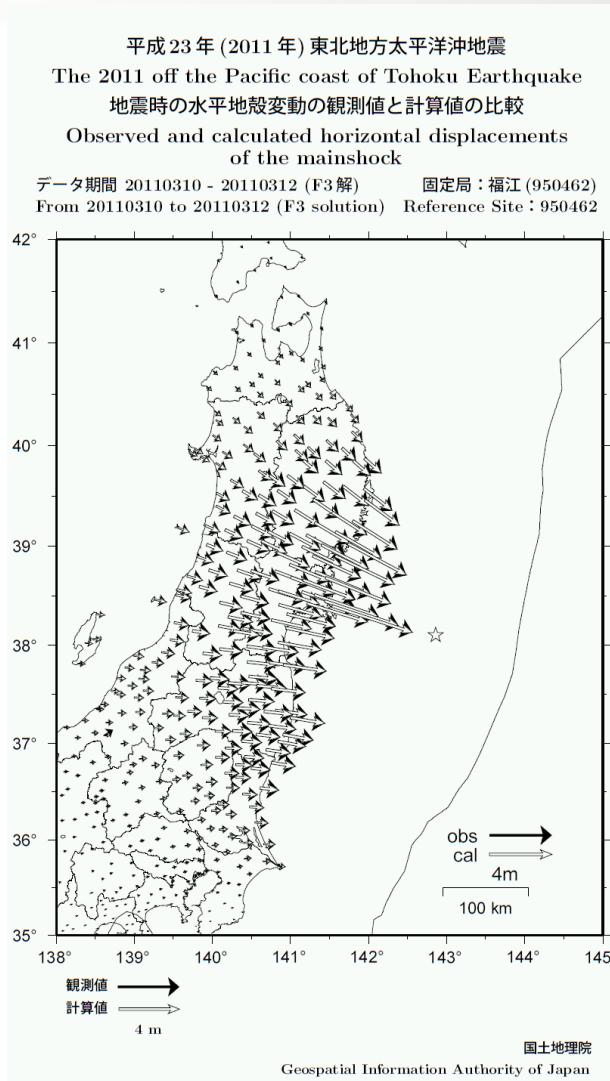
Jacek Kudrys

**Wydział Geodezji Górniczej i Inżynierii Środowiska AGH
Katedra Geomatyki**

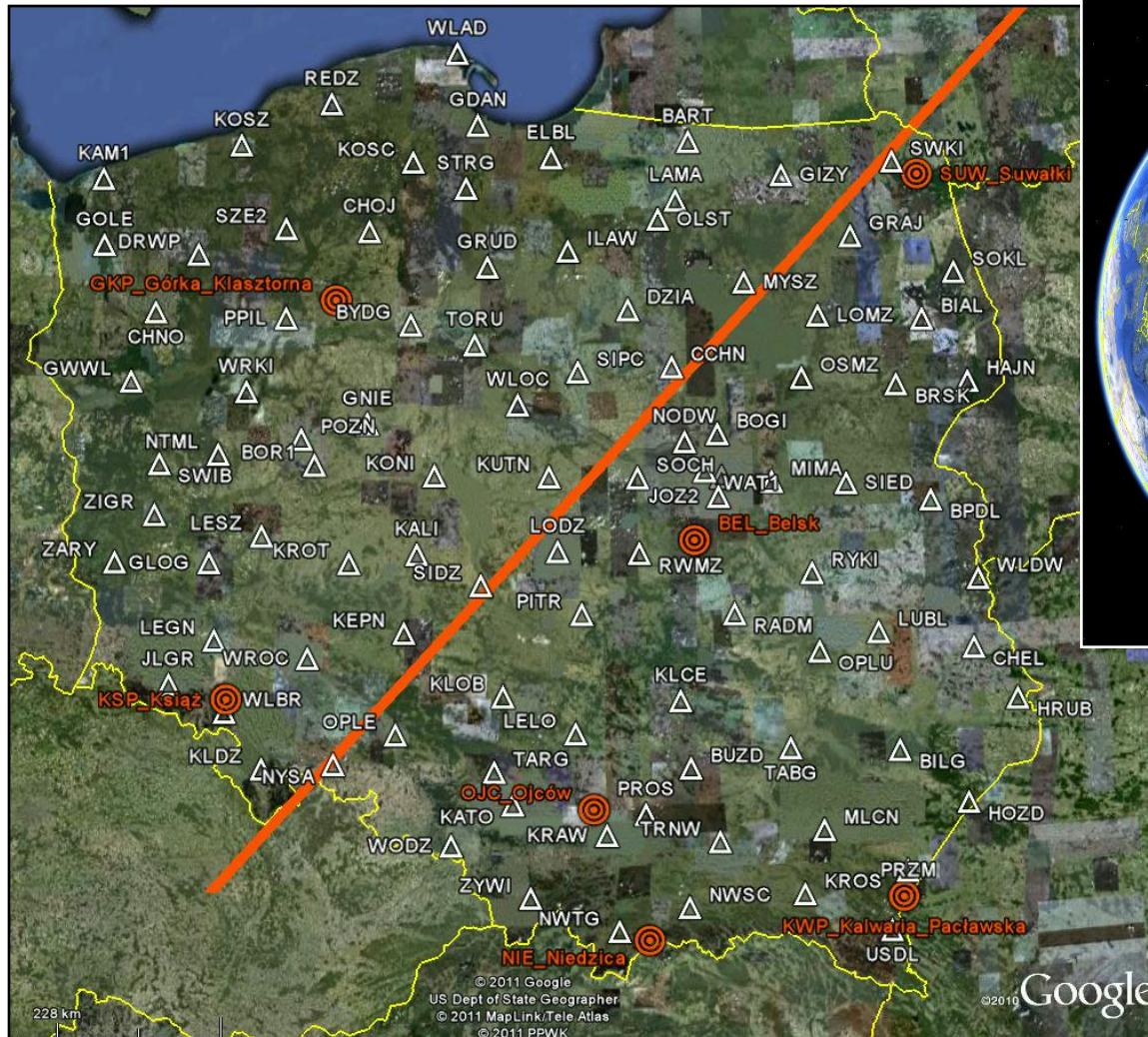
Trzęsienie Ziemi w rejonie Honsiu



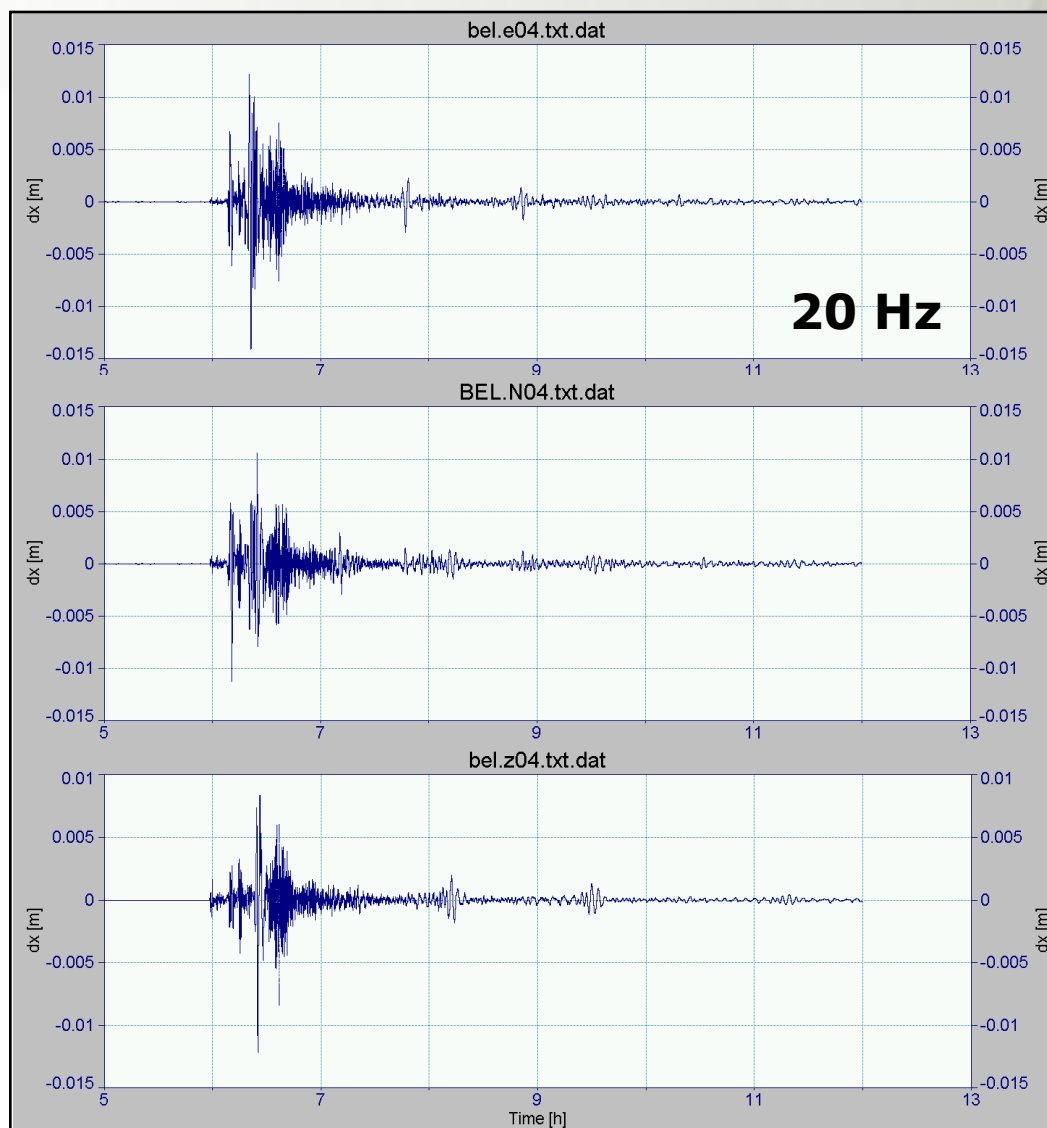
Przemieszczenia w rejonie epicentrum



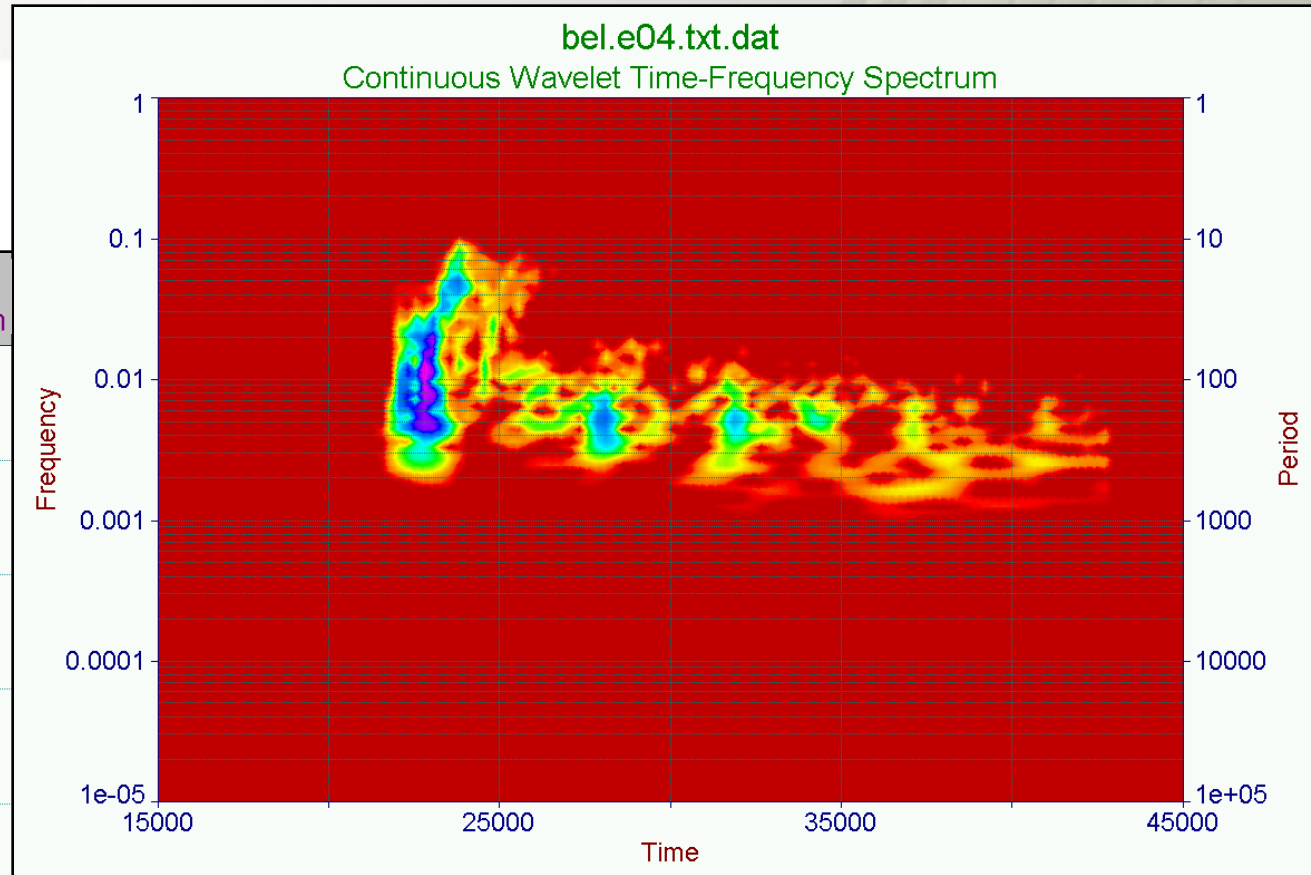
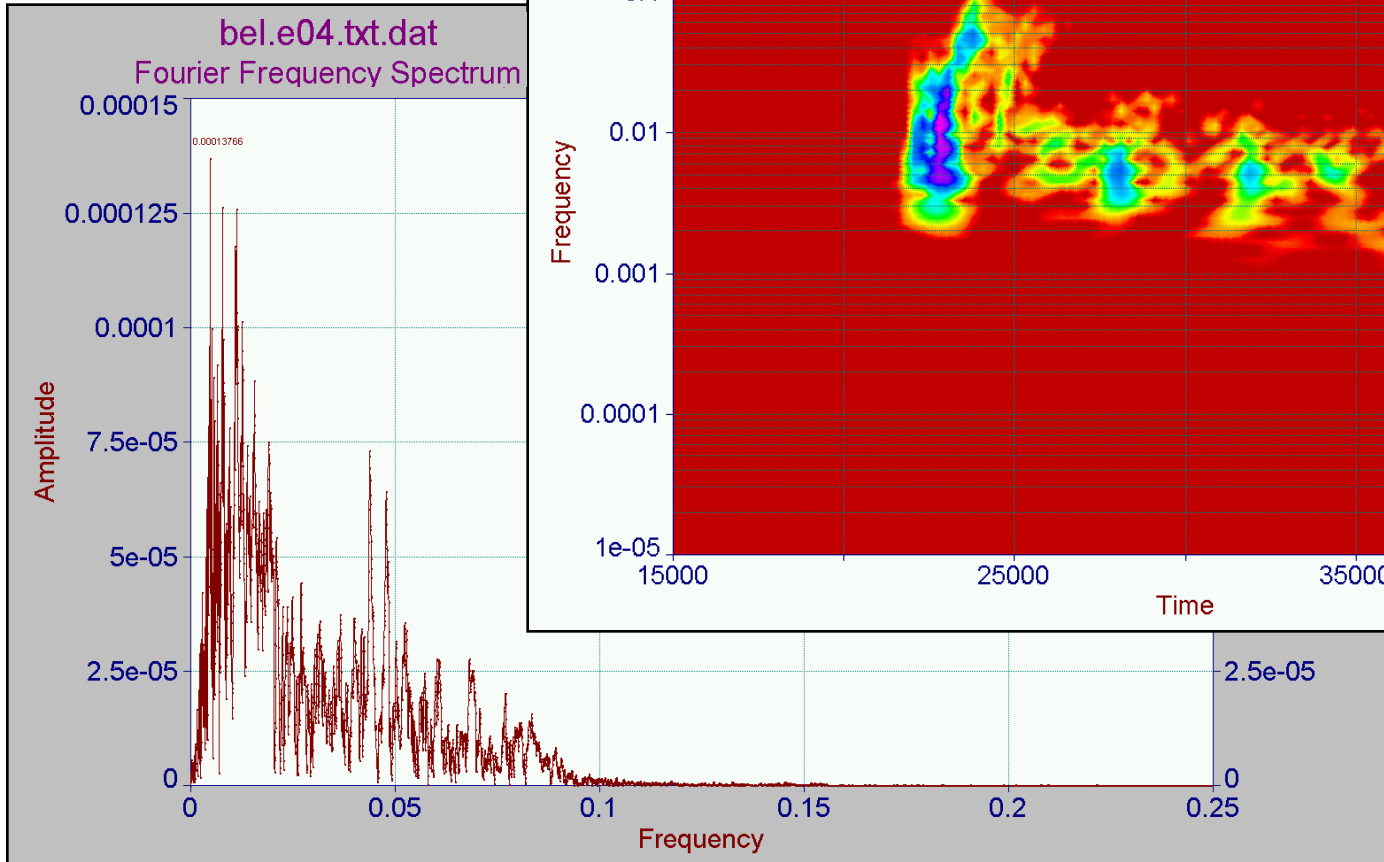
ASG-EUPOS i Polska Sieć Sejsmologiczna



Seismogramy stacji BEL (scałkowane)



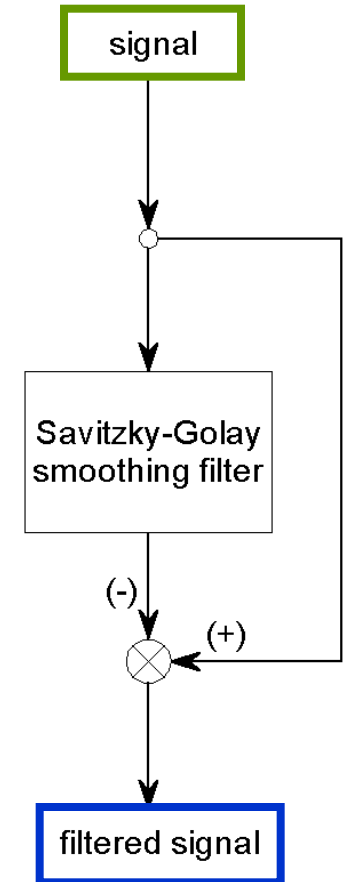
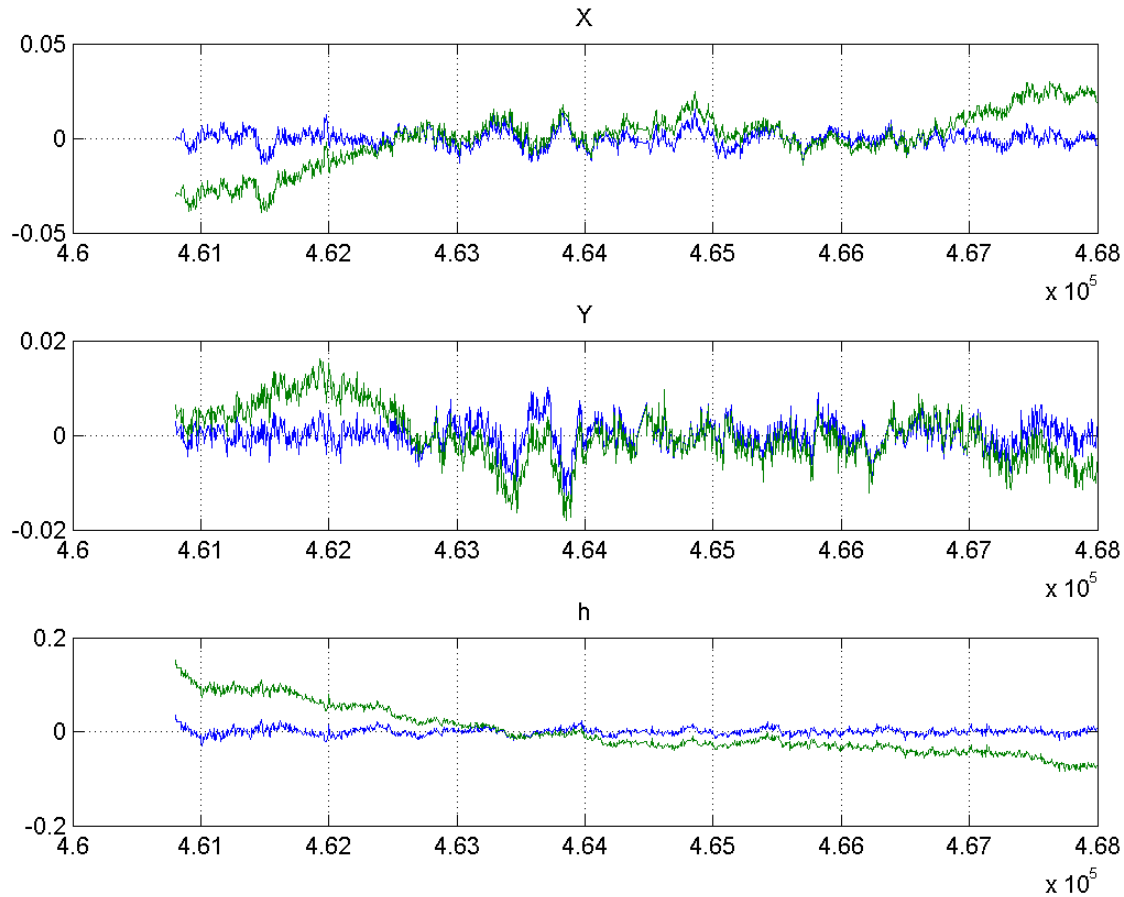
Analiza spektralna sejsmogramów



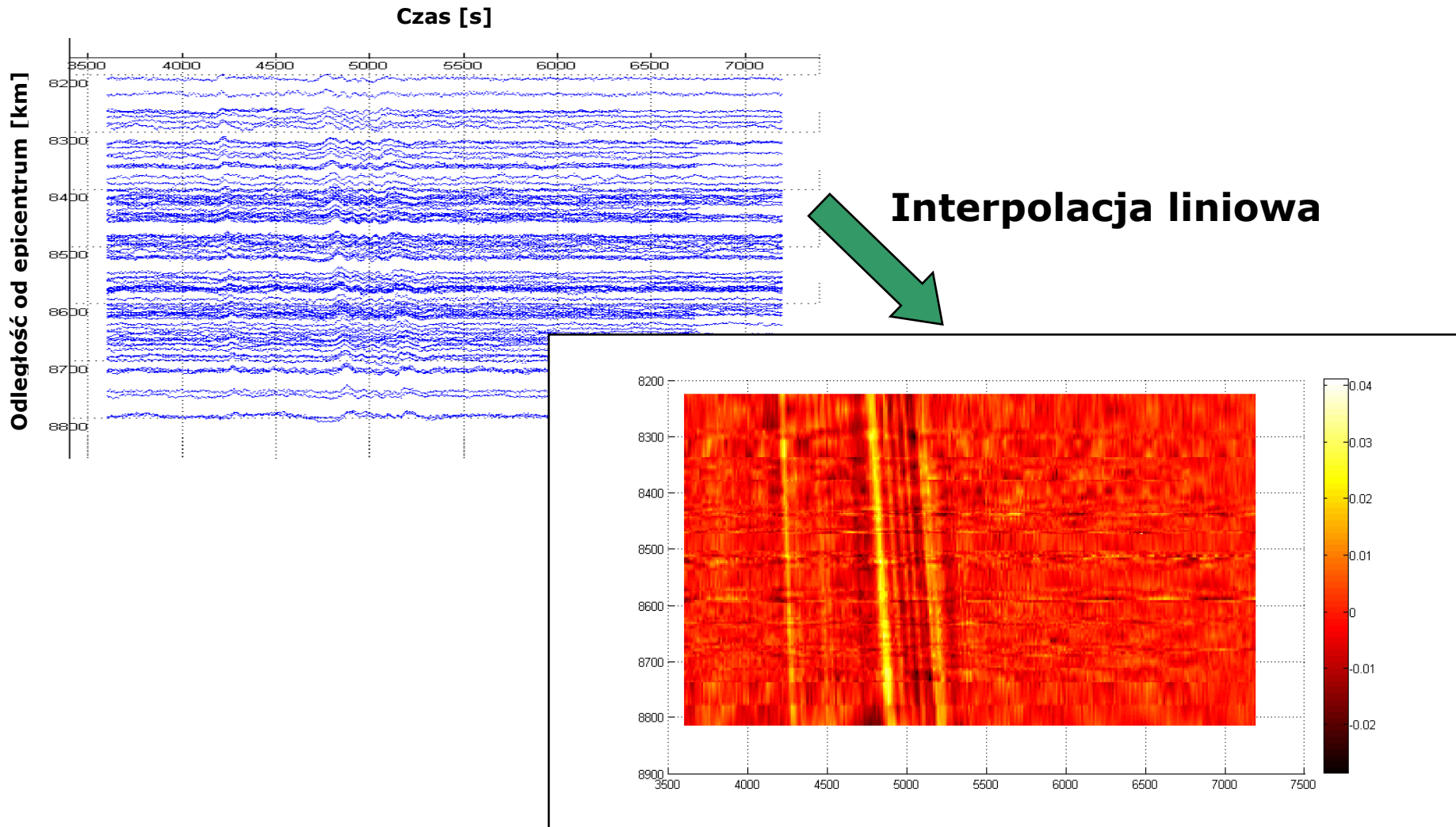
Opracowanie obserwacji GPS

- 98 stacji systemu ASG-EUPOS
- Bernese 5.0
- Precise Point Positioning
- zegary satelitów CODE 5 sek.
- orbita precyzyjna CODE
- filtr wygładzający
- interpolacja danych pomiędzy stacjami

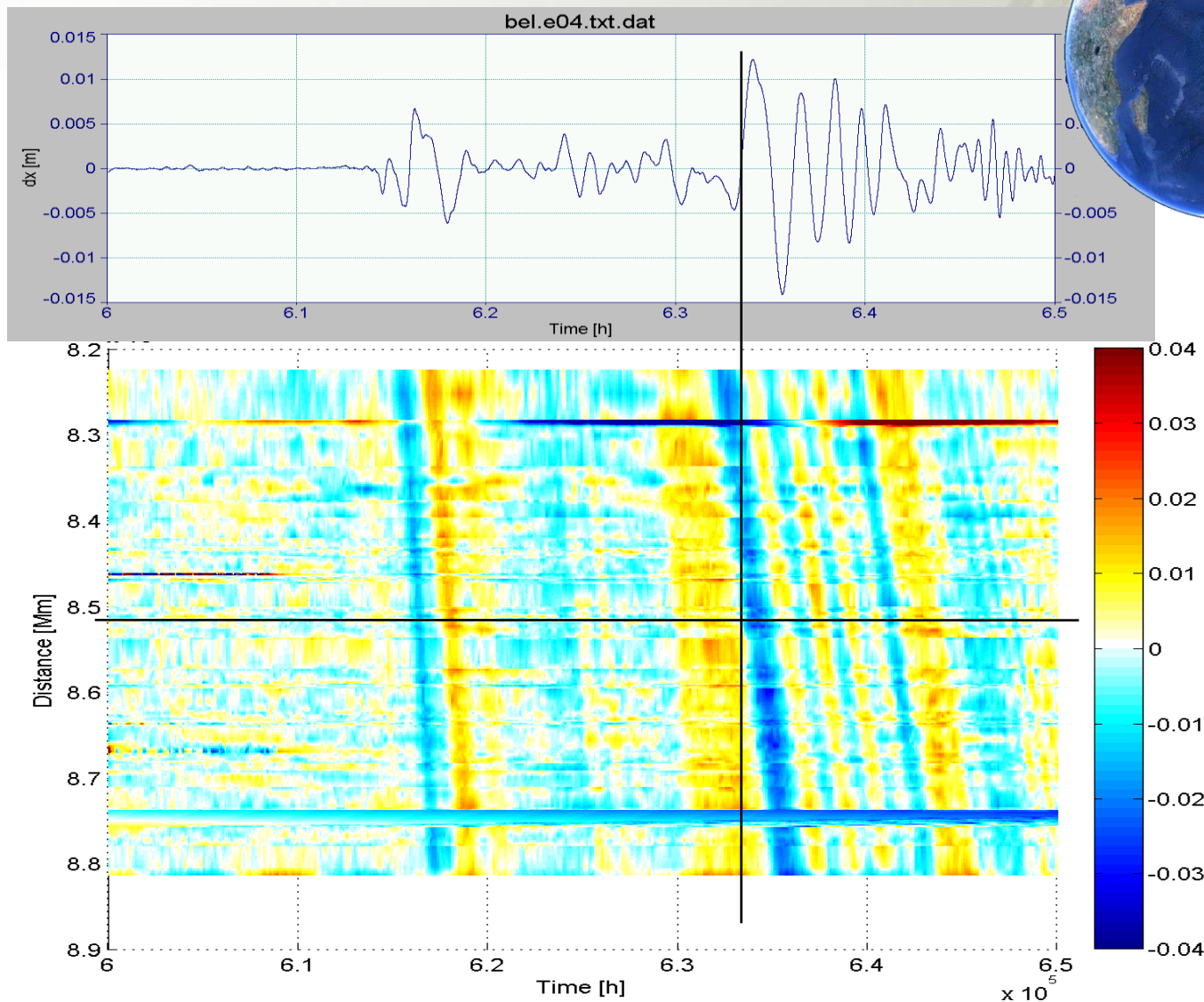
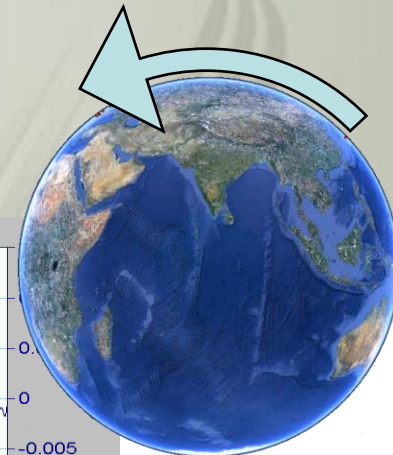
Filtr wygładzający Savitzky-Golay



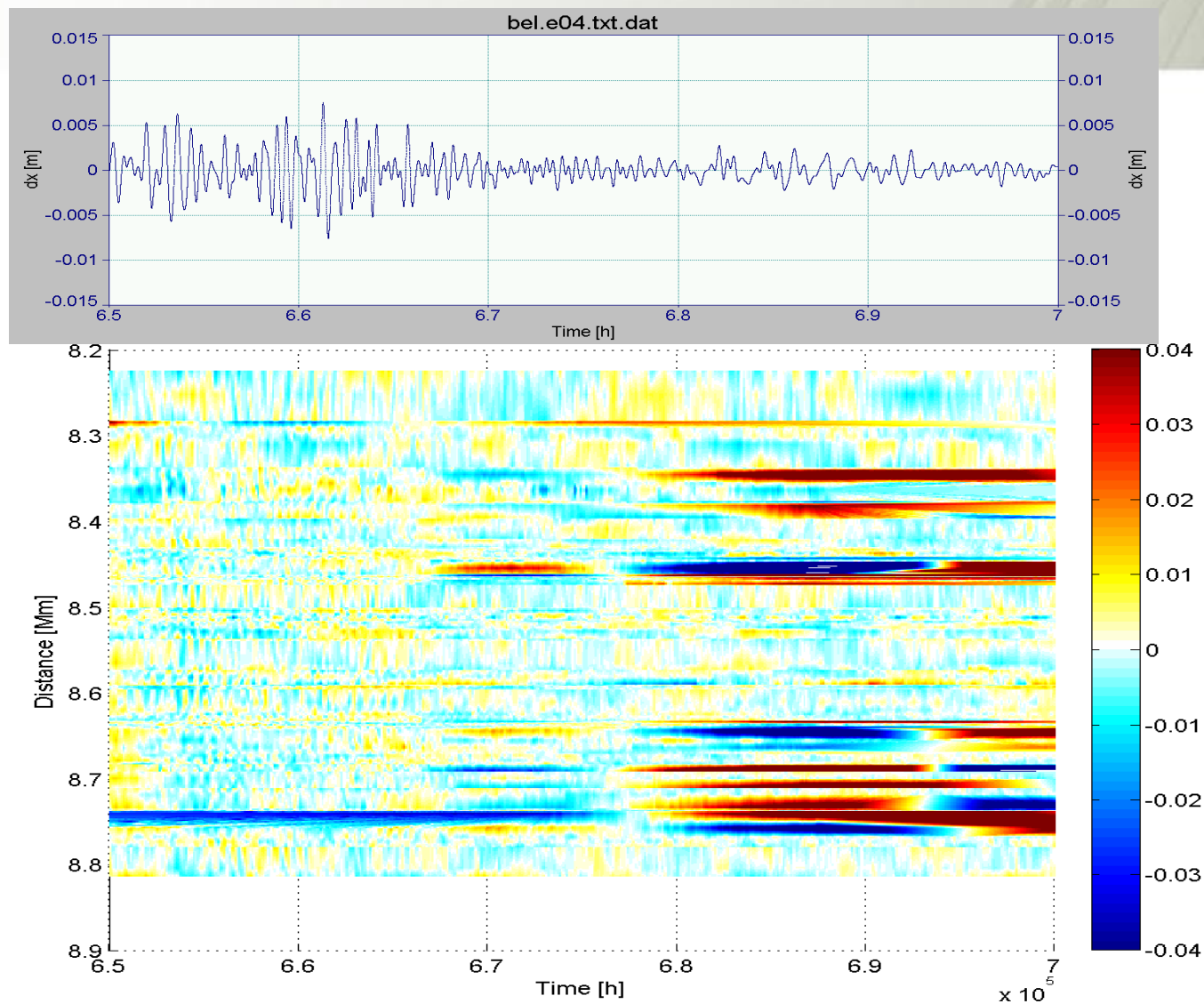
Wyniki opracowania



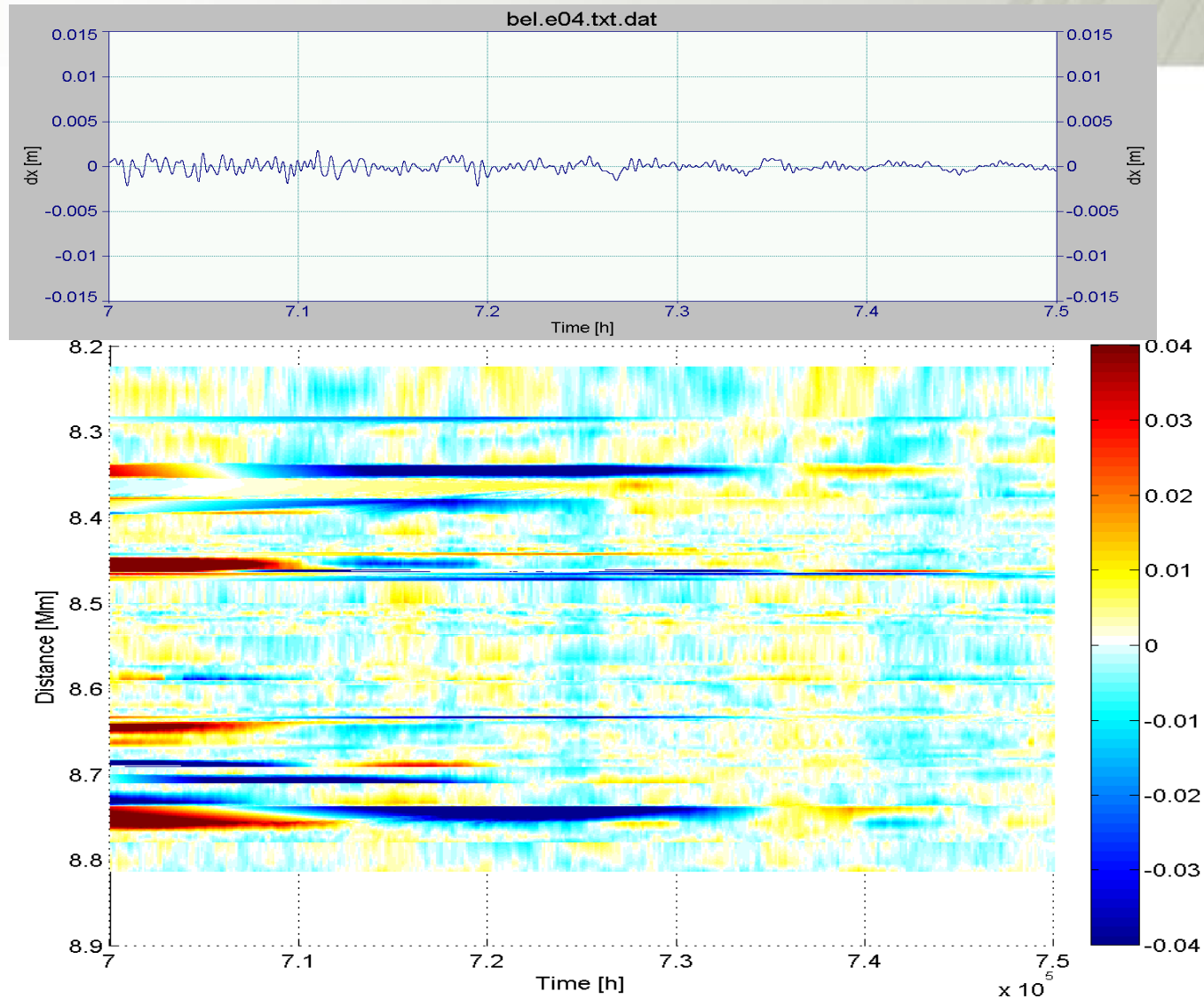
Wyniki opracowania (E-W)



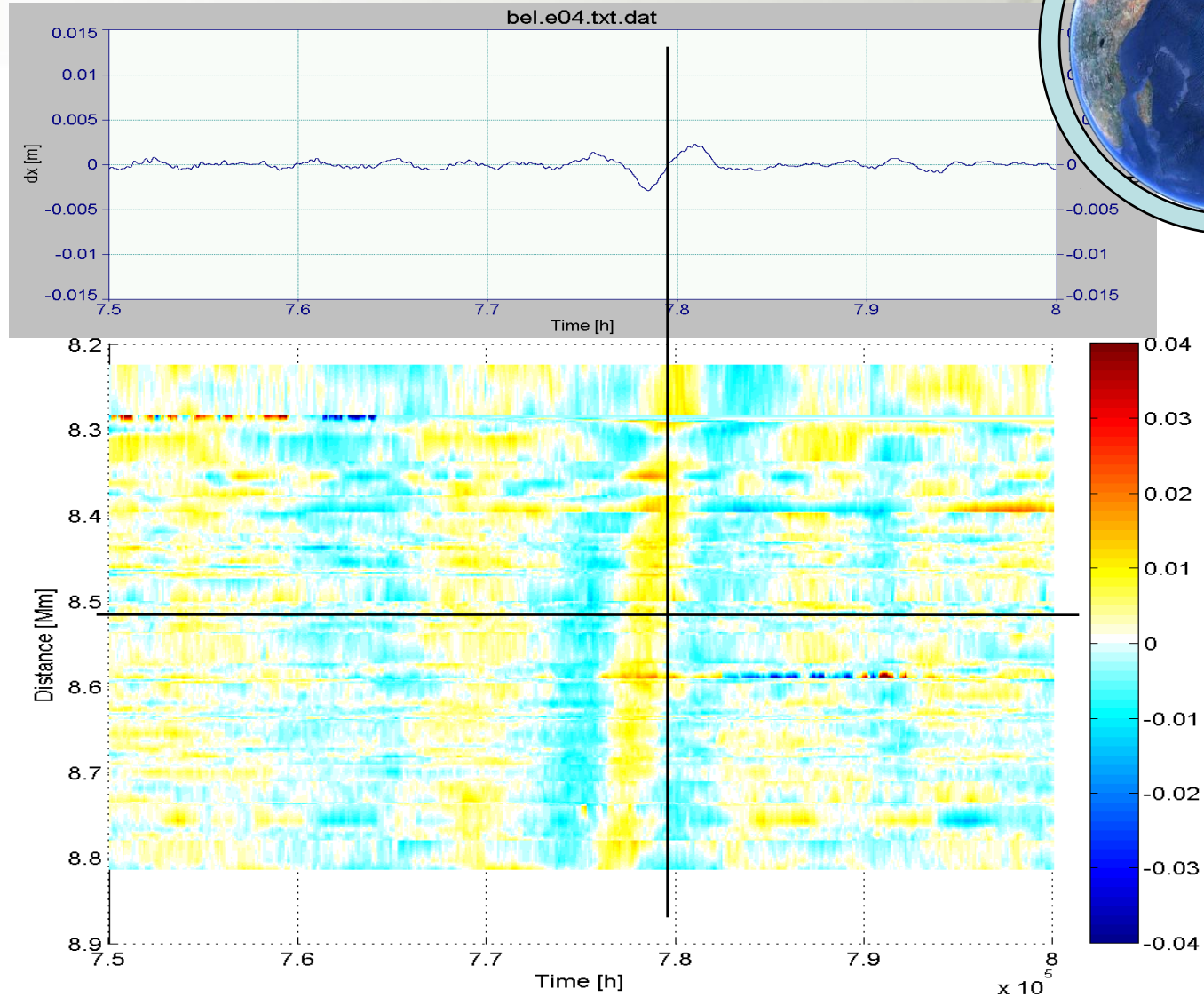
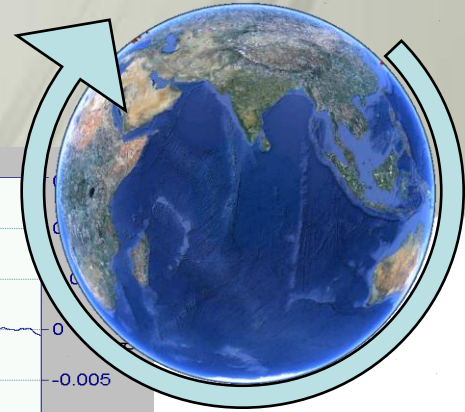
Wyniki opracowania (E-W)



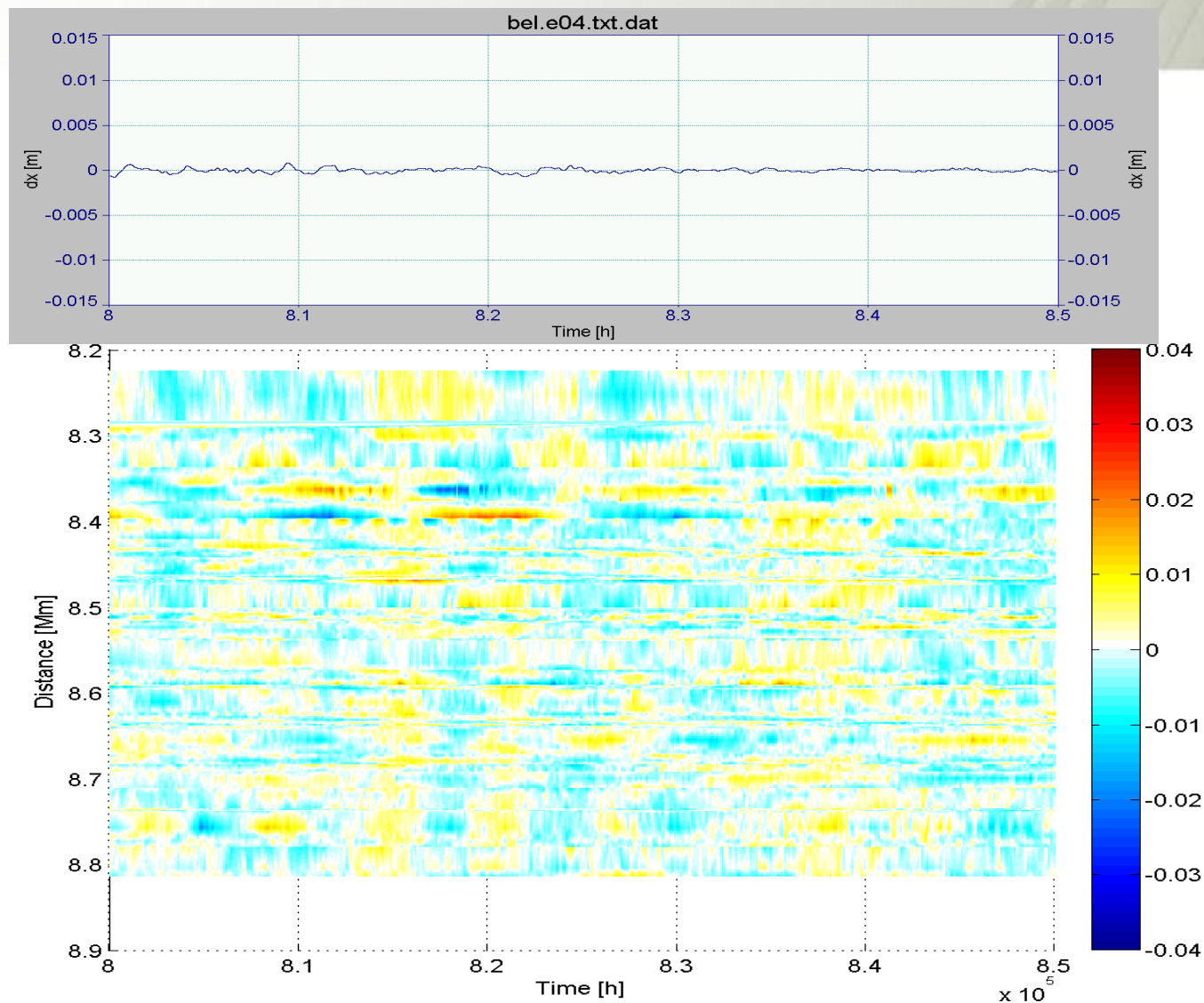
Wyniki opracowania (E-W)



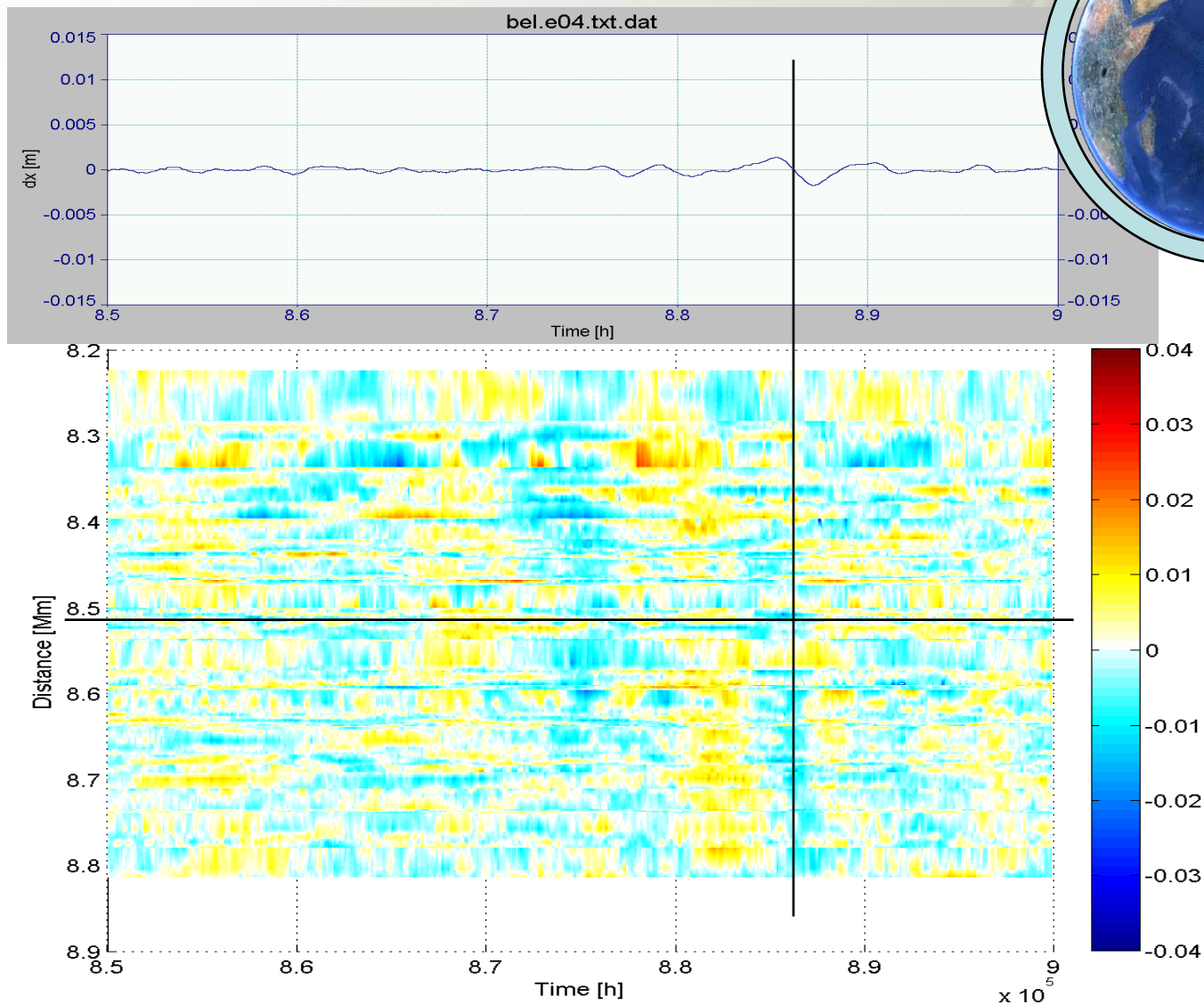
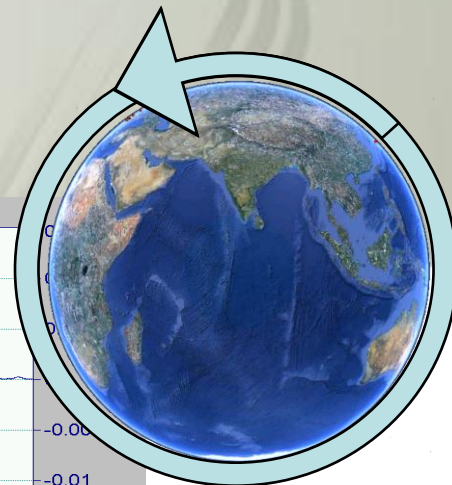
Wyniki opracowania (E-W)



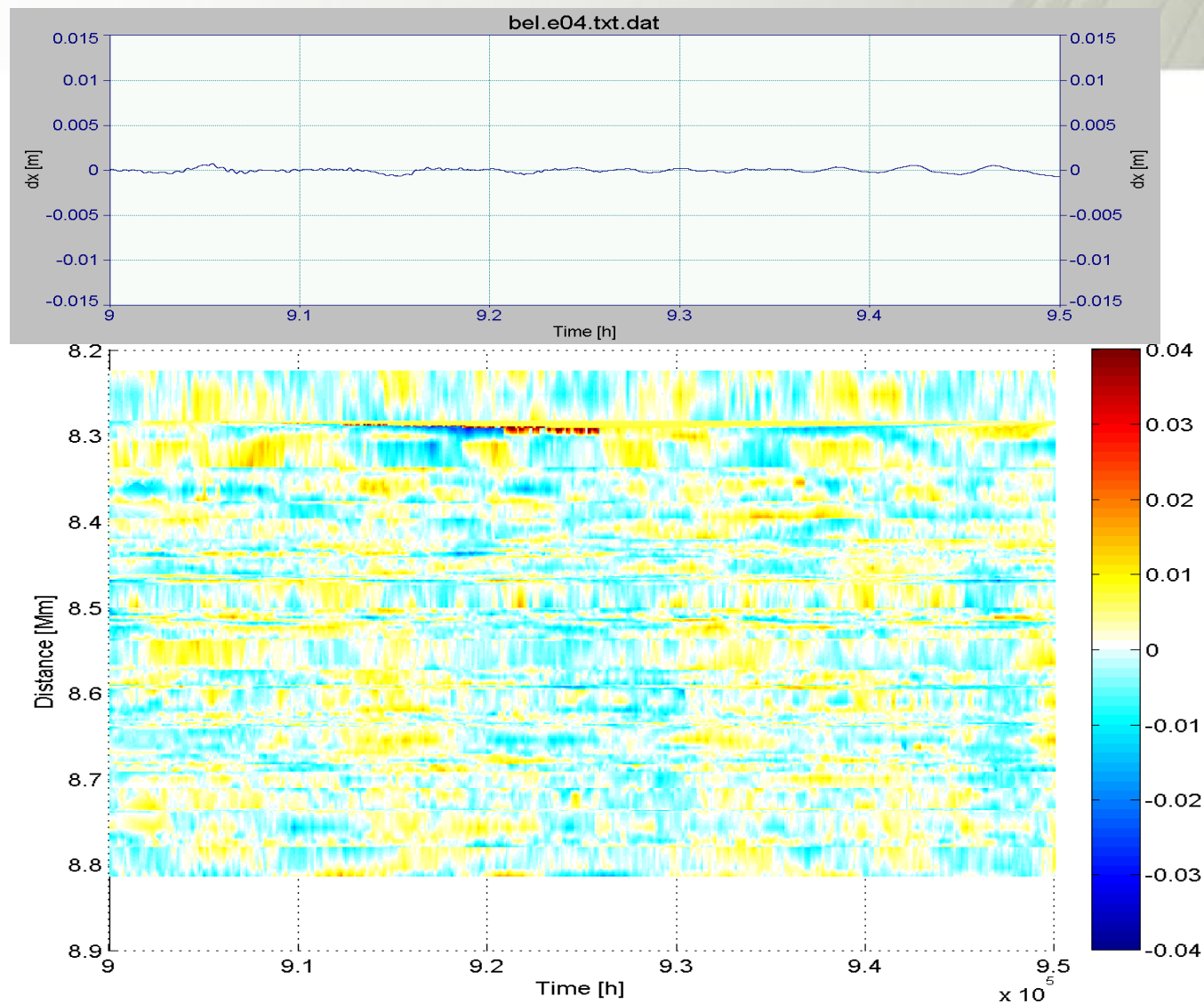
Wyniki opracowania (E-W)



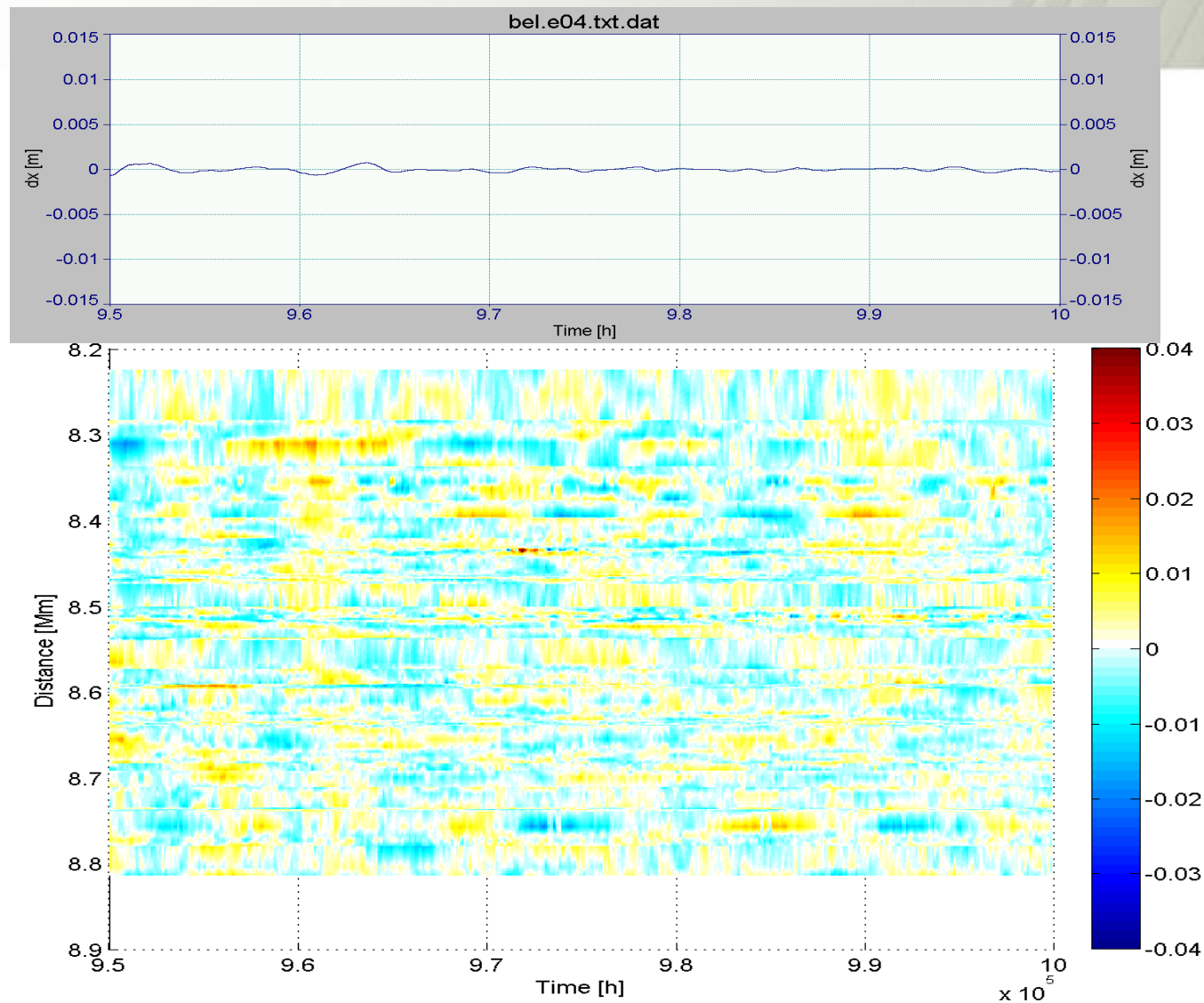
Wyniki opracowania (E-W)



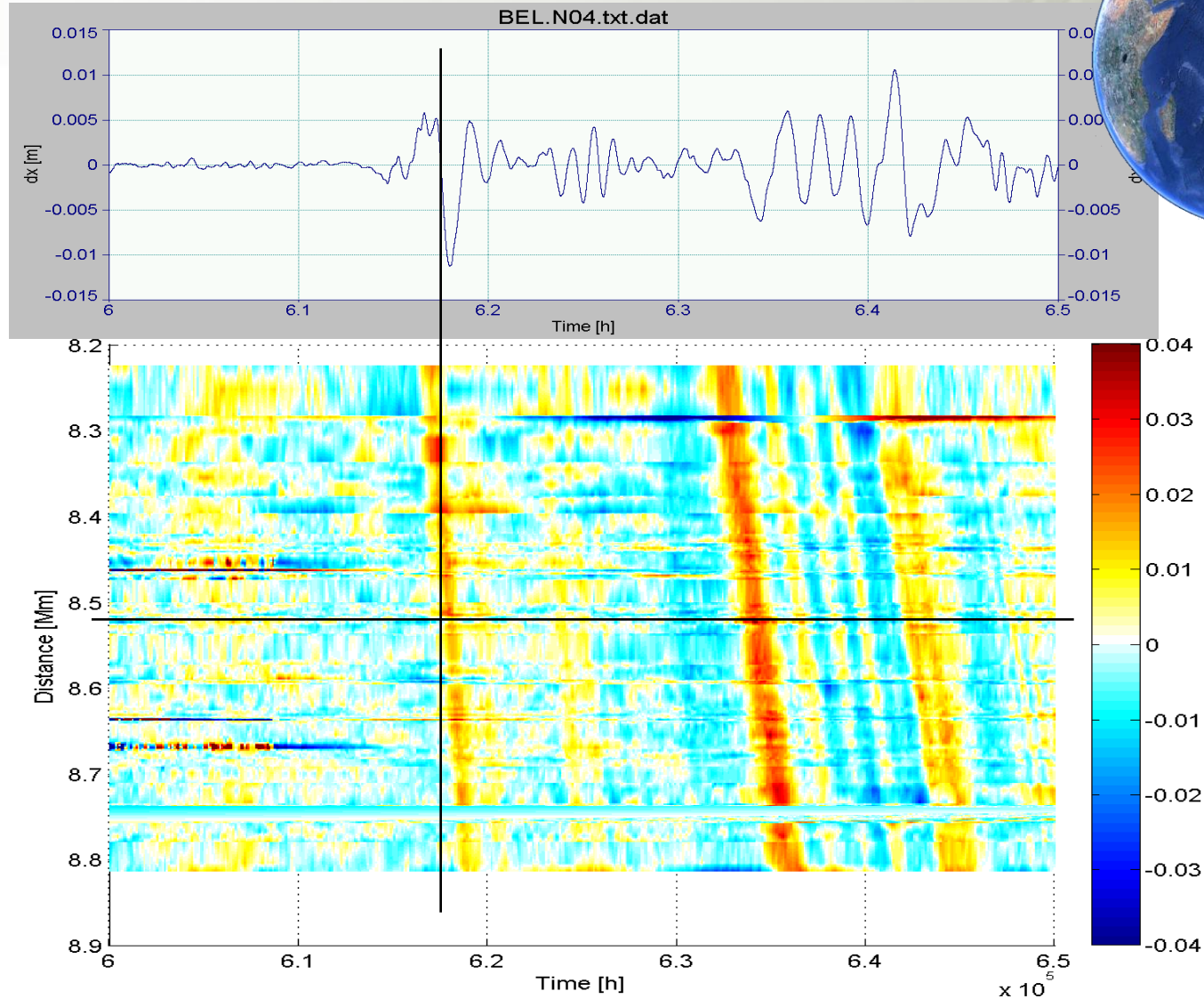
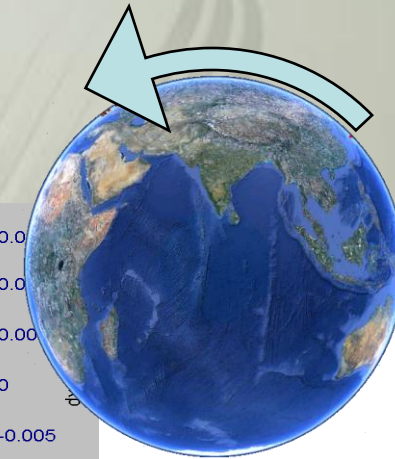
Wyniki opracowania (E-W)



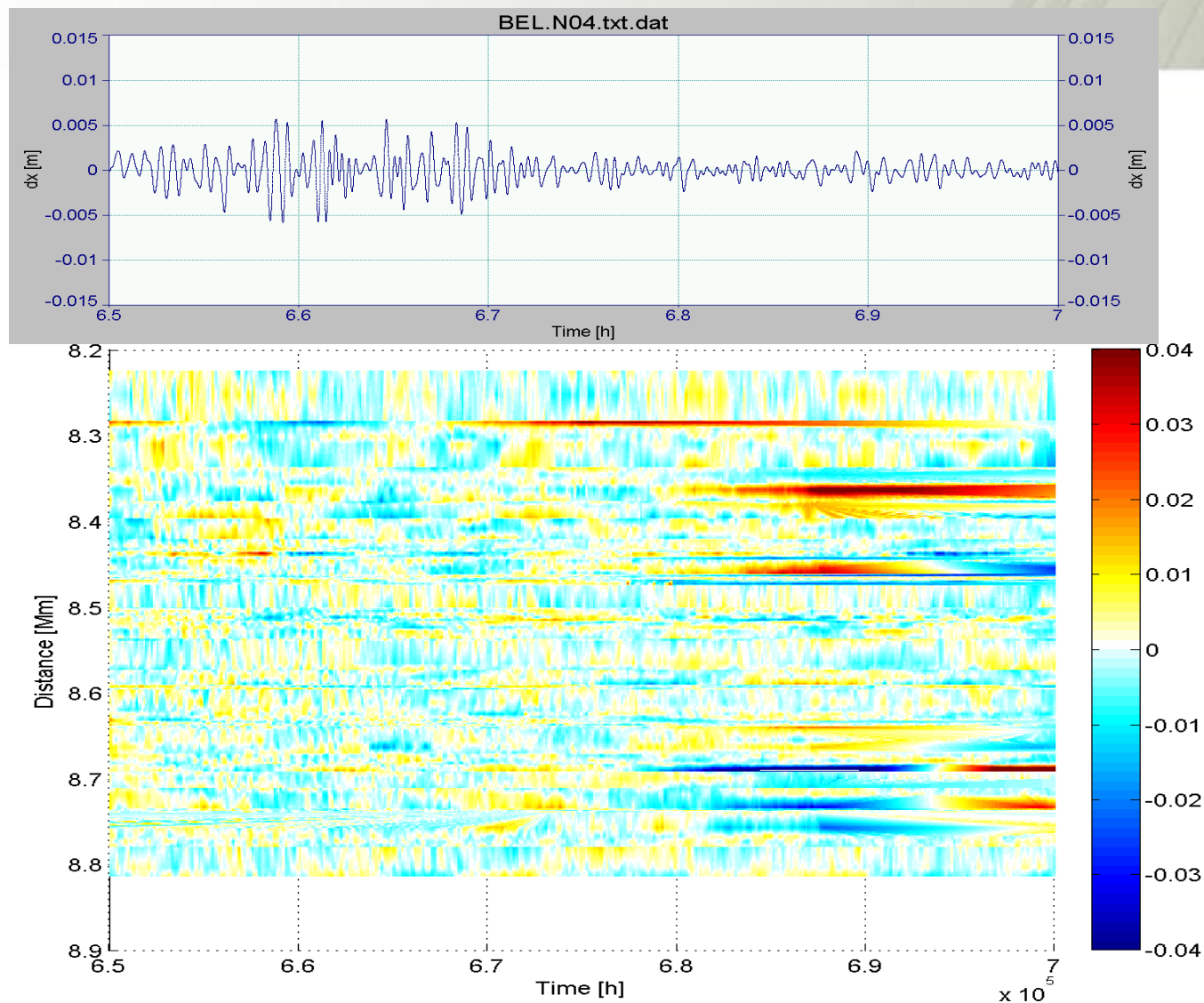
Wyniki opracowania (E-W)



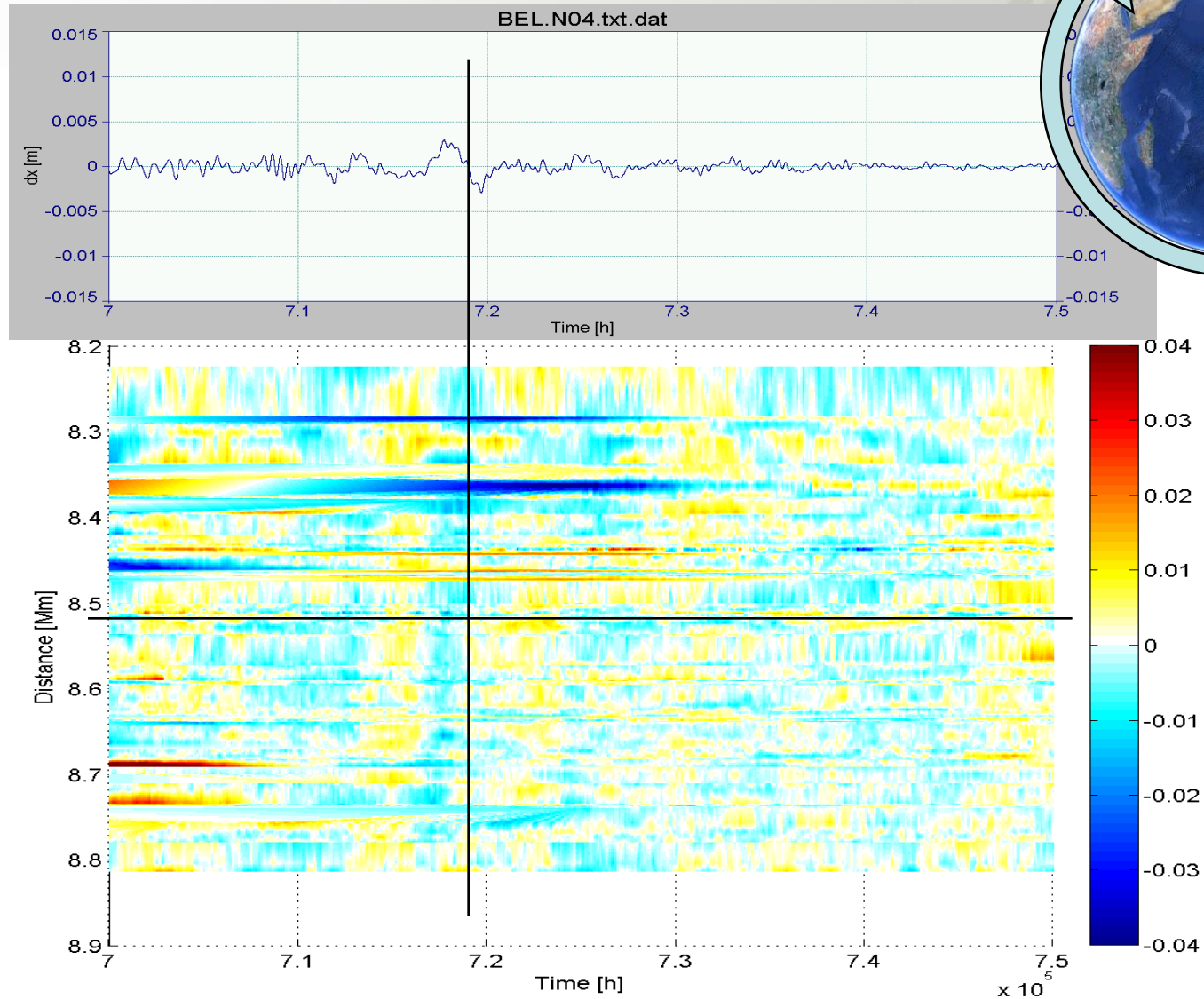
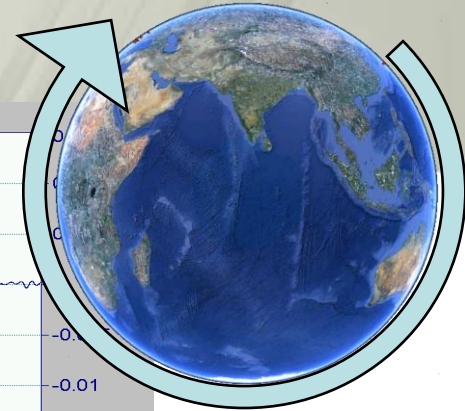
Wyniki opracowania (N-S)



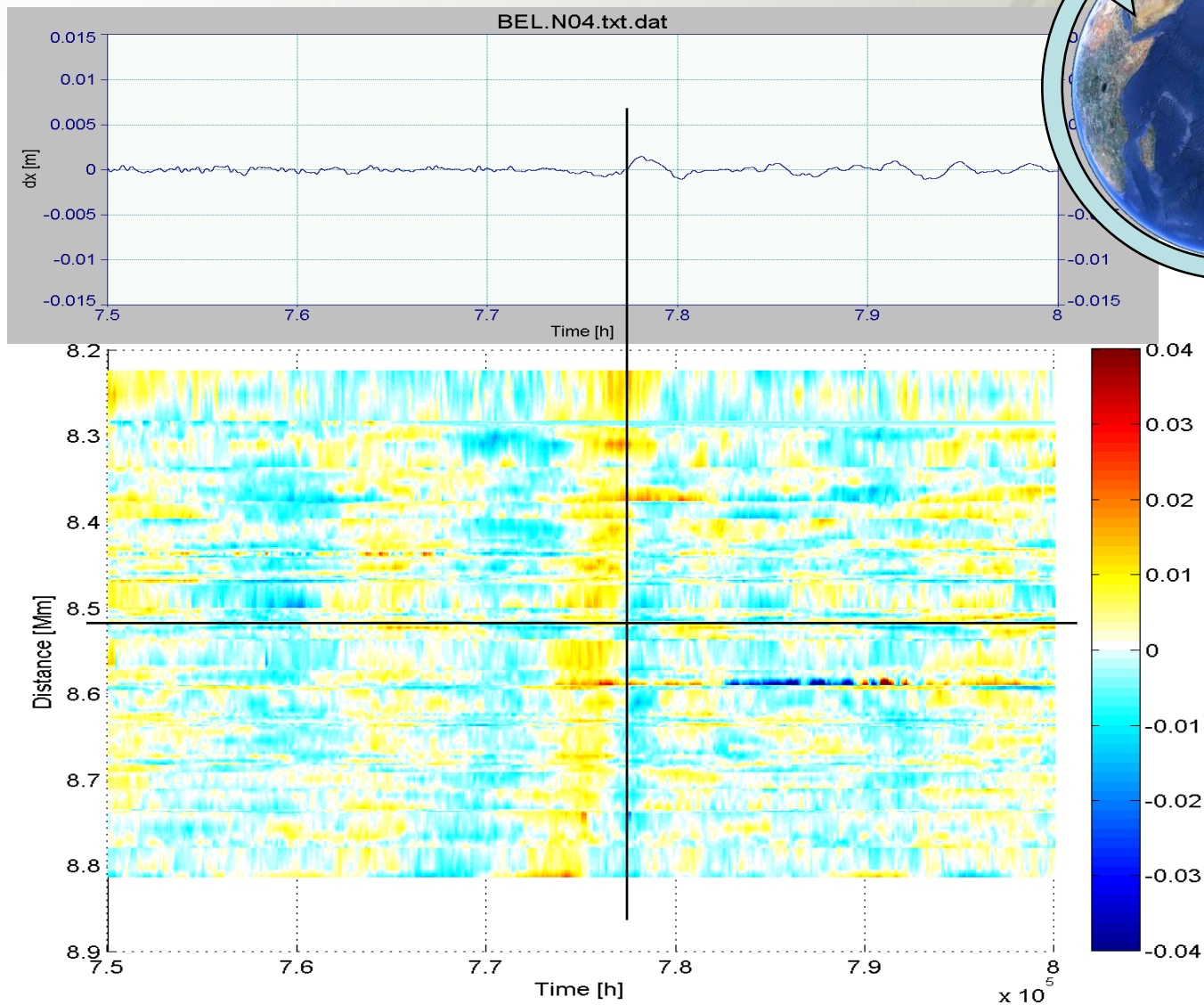
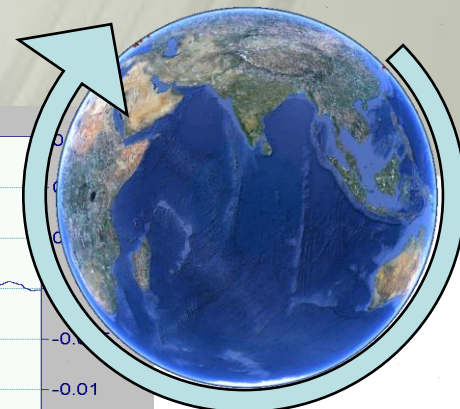
Wyniki opracowania (N-S)



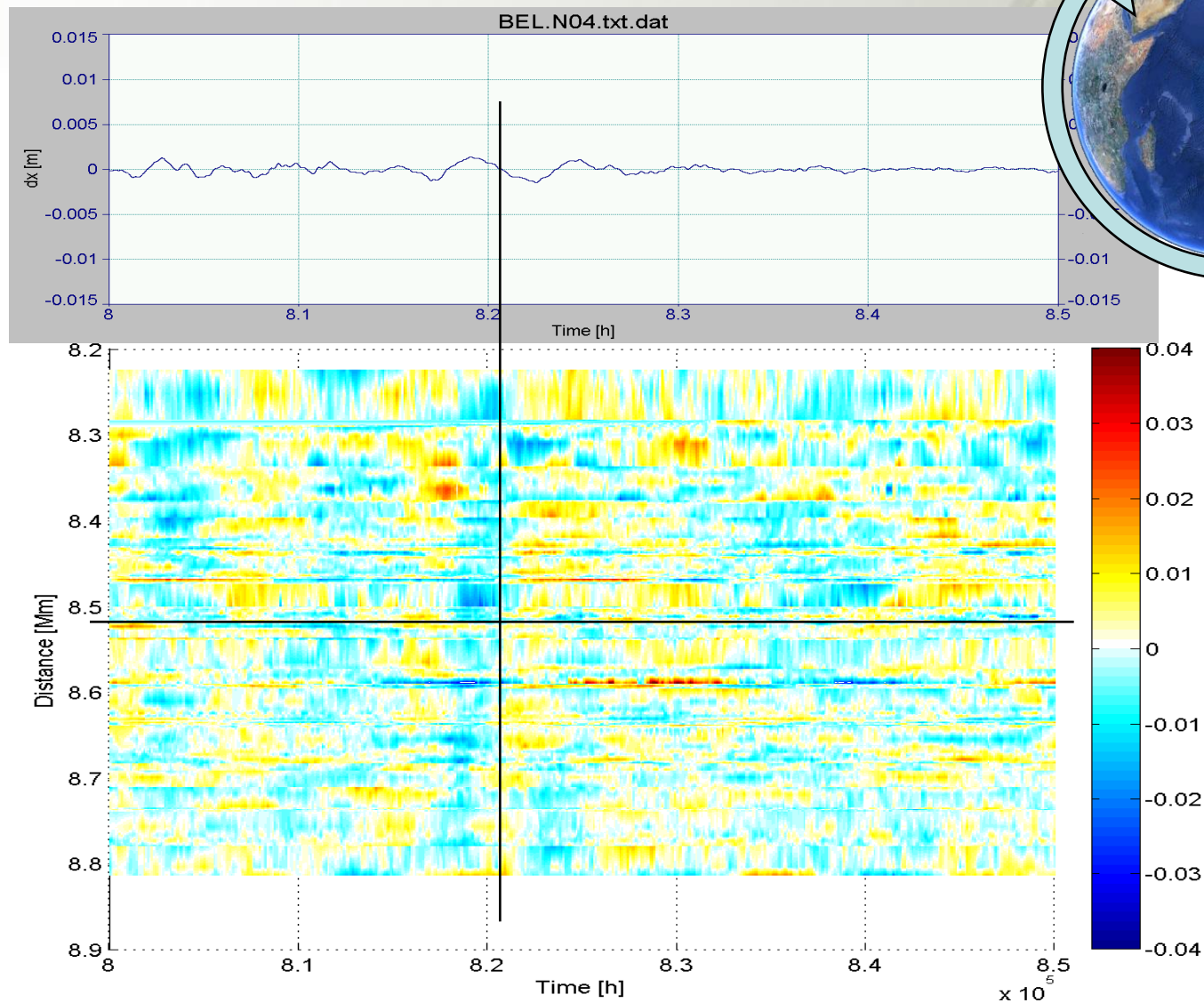
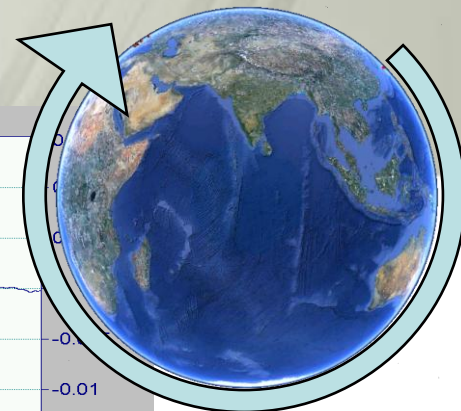
Wyniki opracowania (N-S)



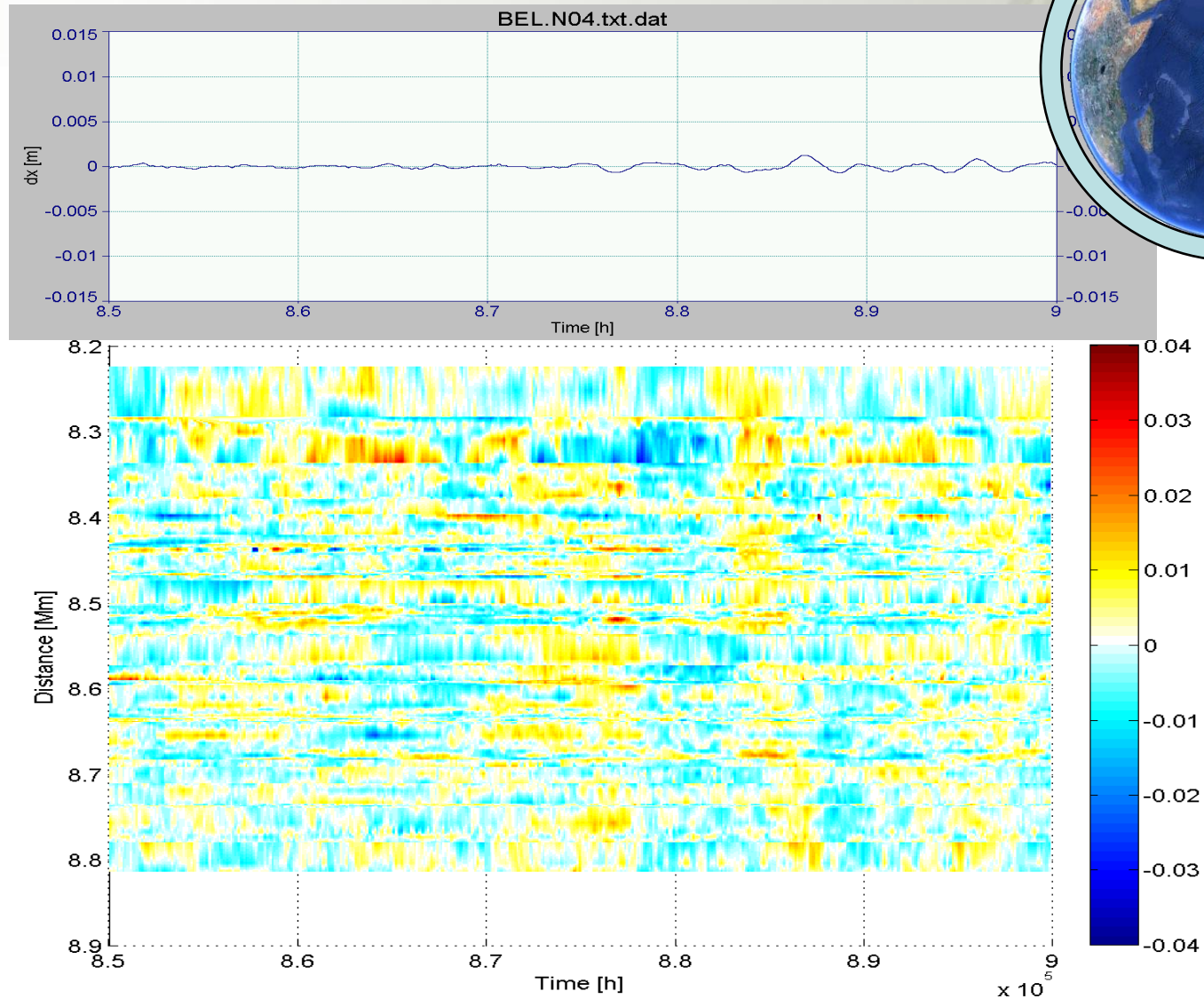
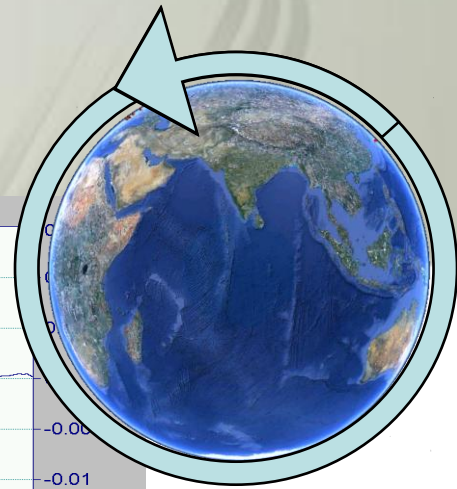
Wyniki opracowania (N-S)



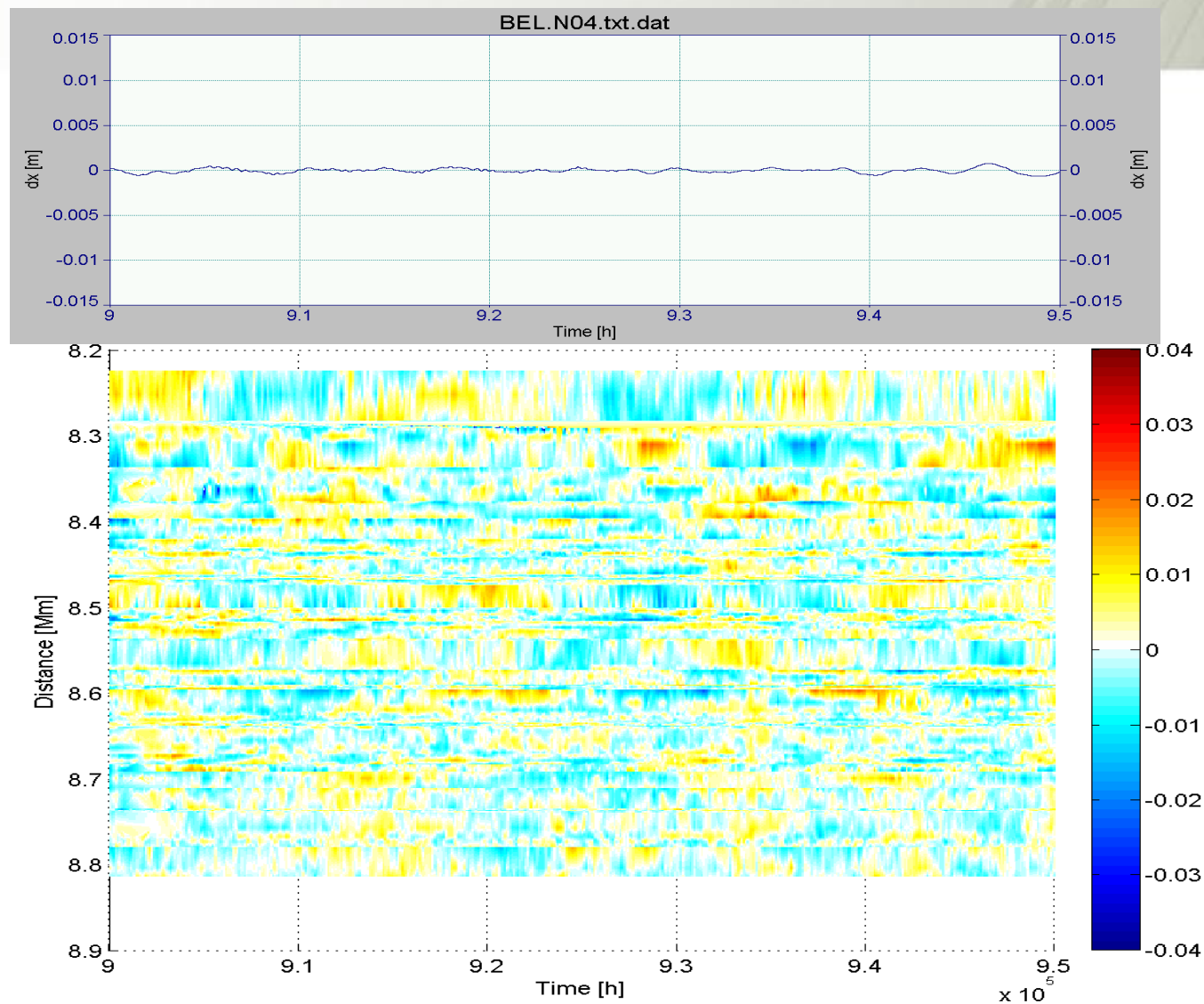
Wyniki opracowania (N-S)



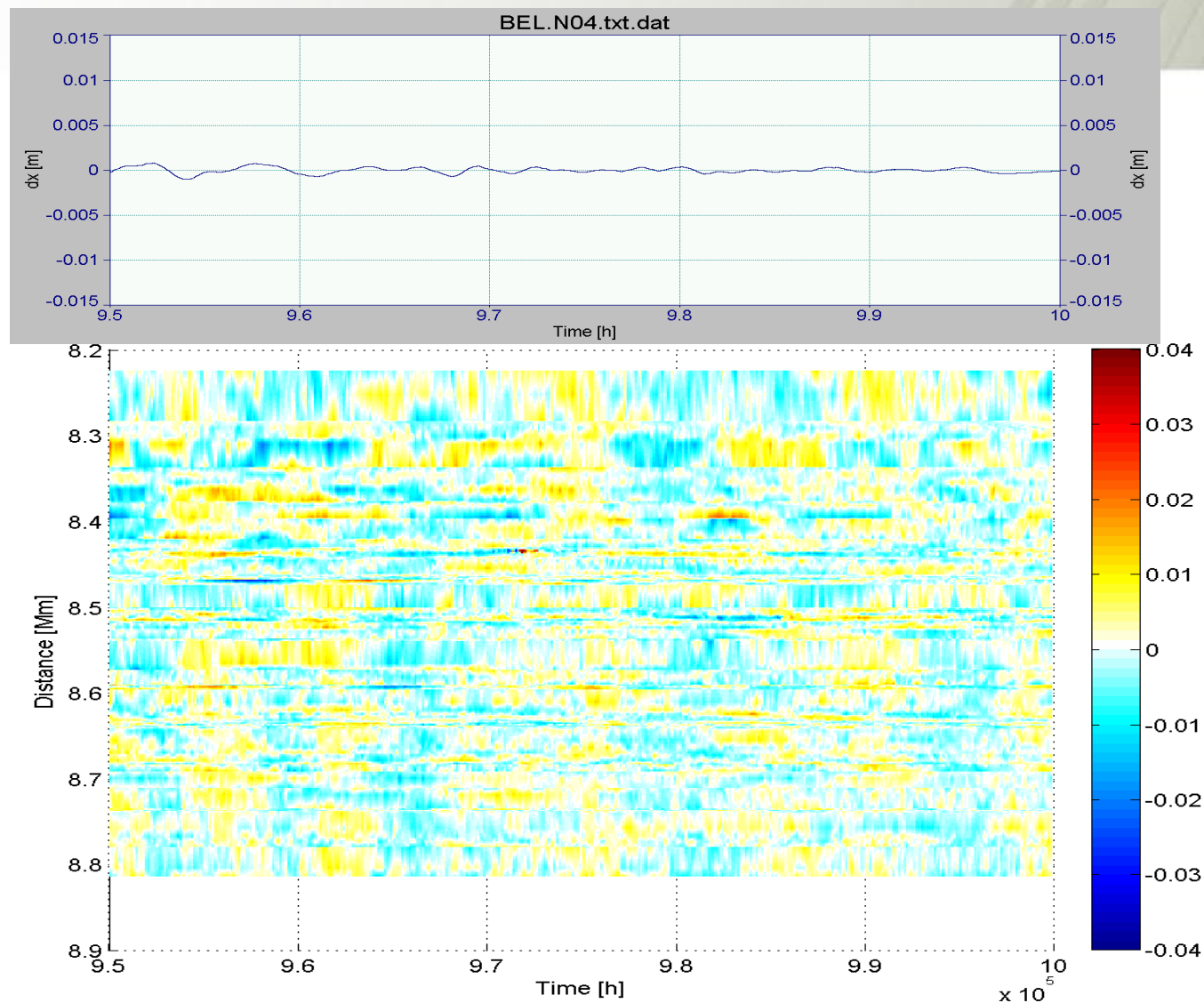
Wyniki opracowania (N-S)



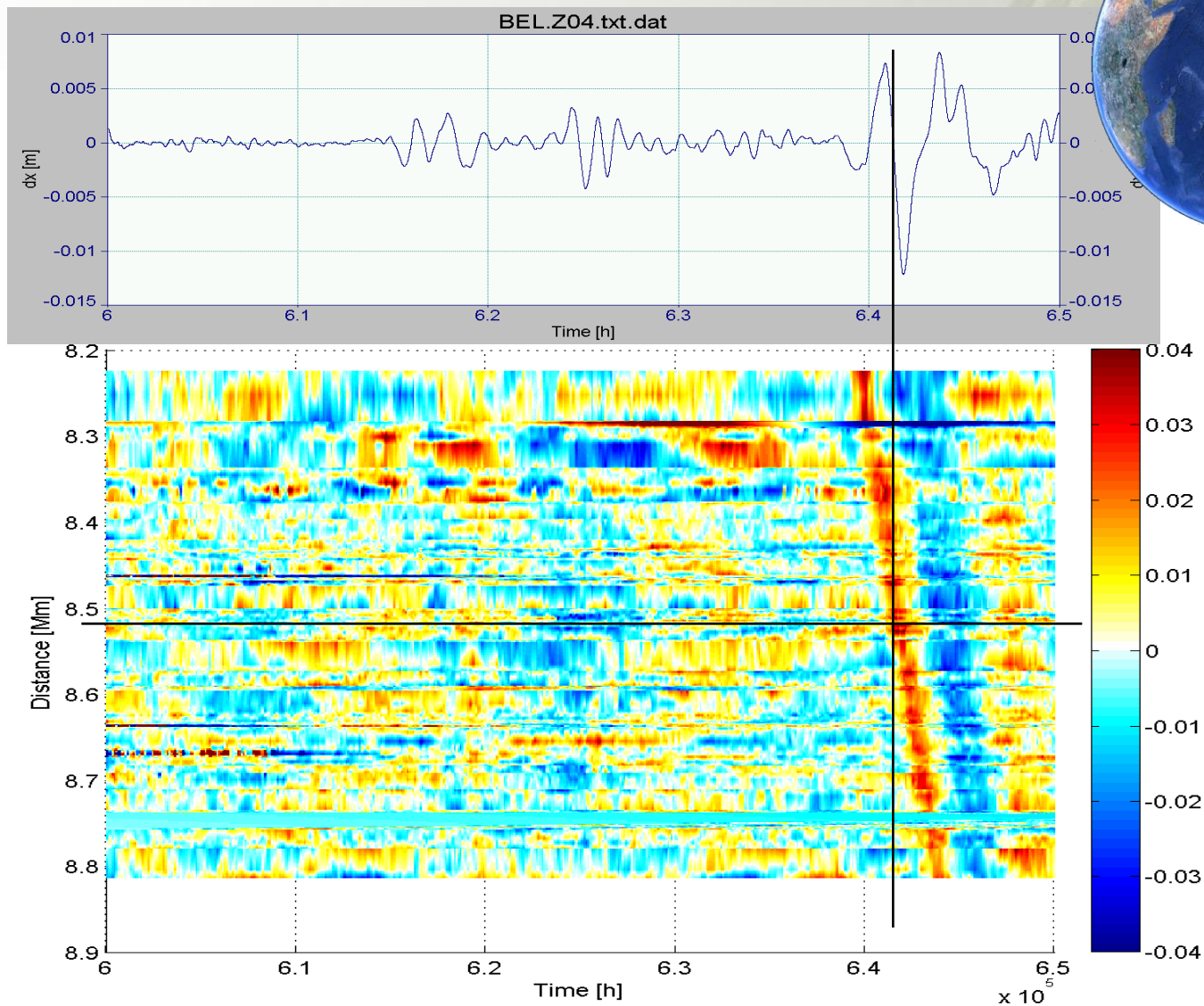
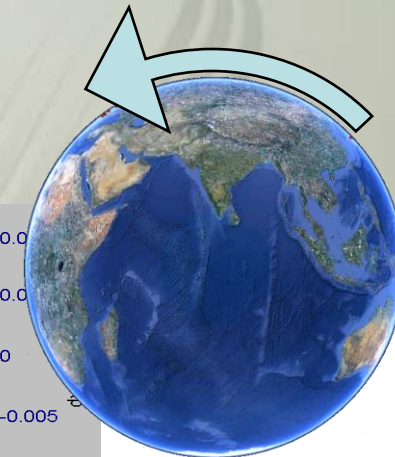
Wyniki opracowania (N-S)



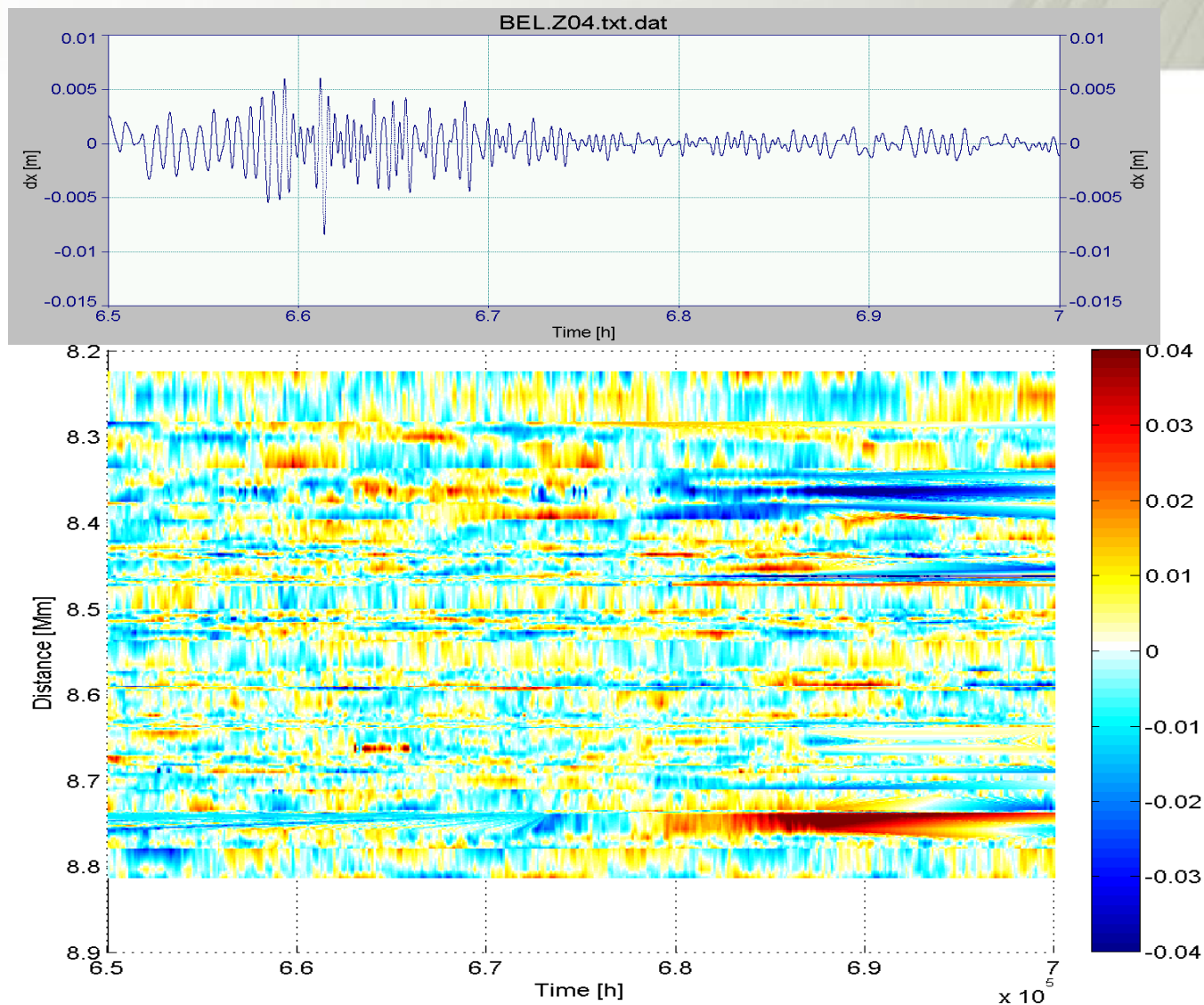
Wyniki opracowania (N-S)



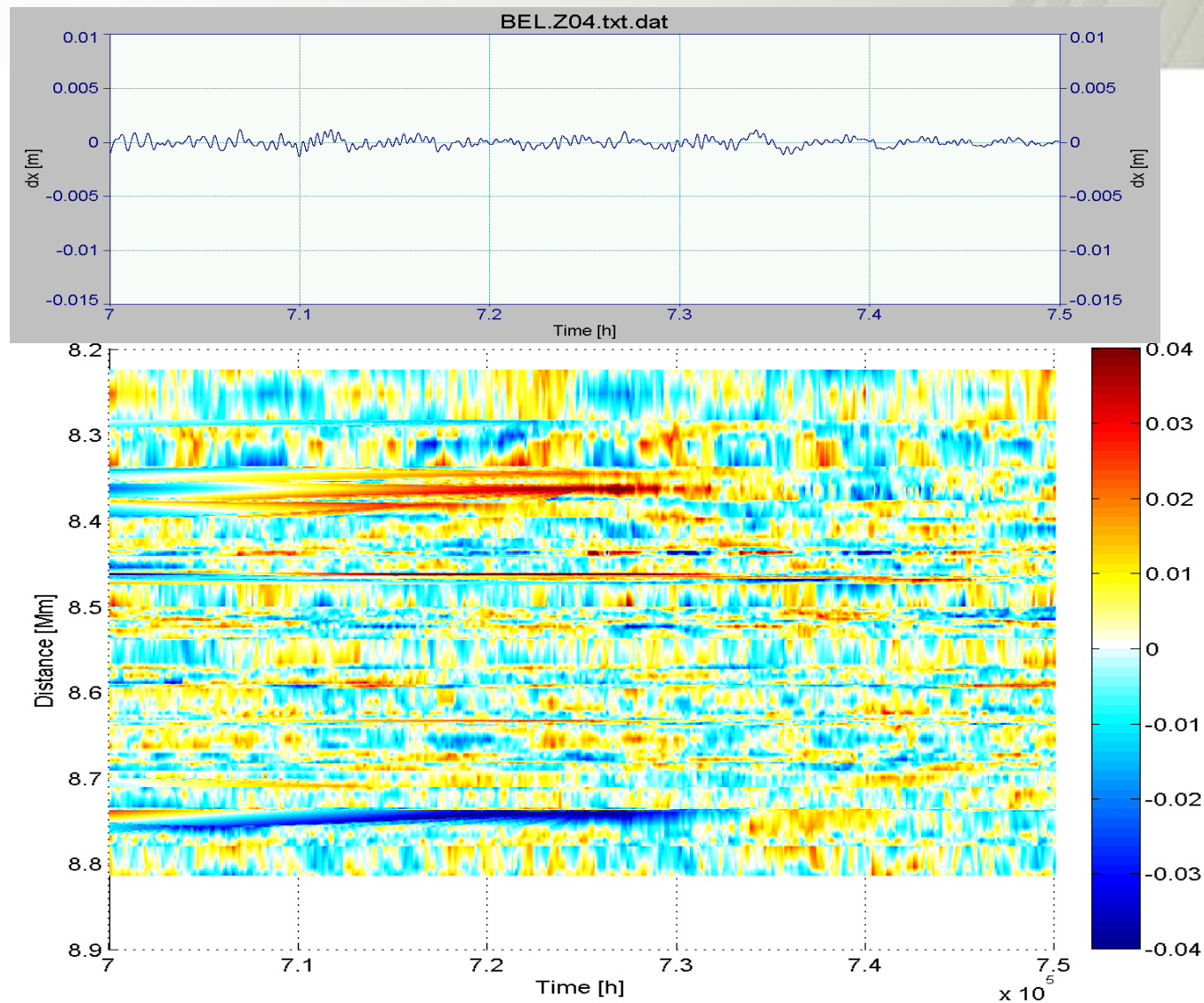
Wyniki opracowania (h)



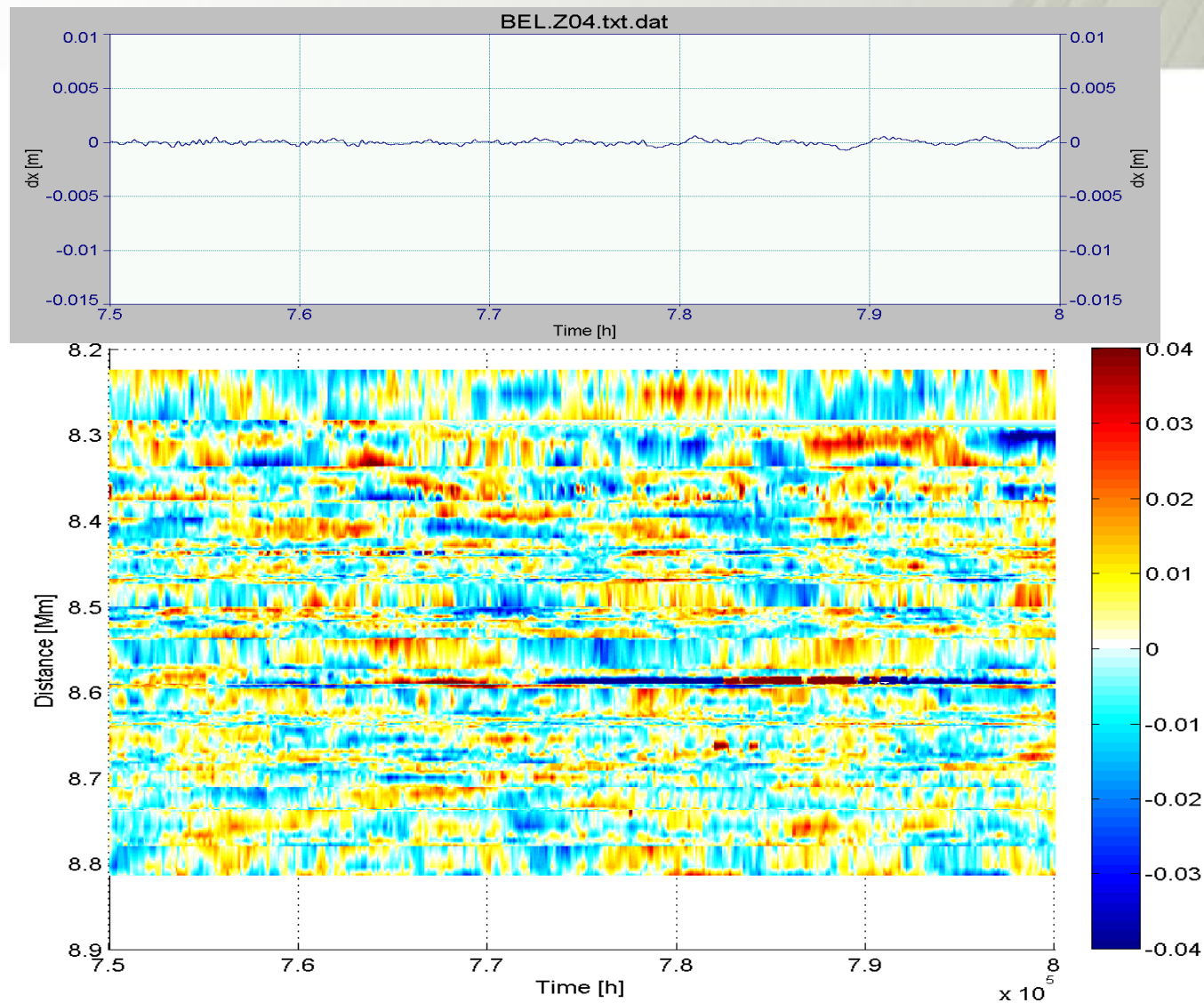
Wyniki opracowania (h)



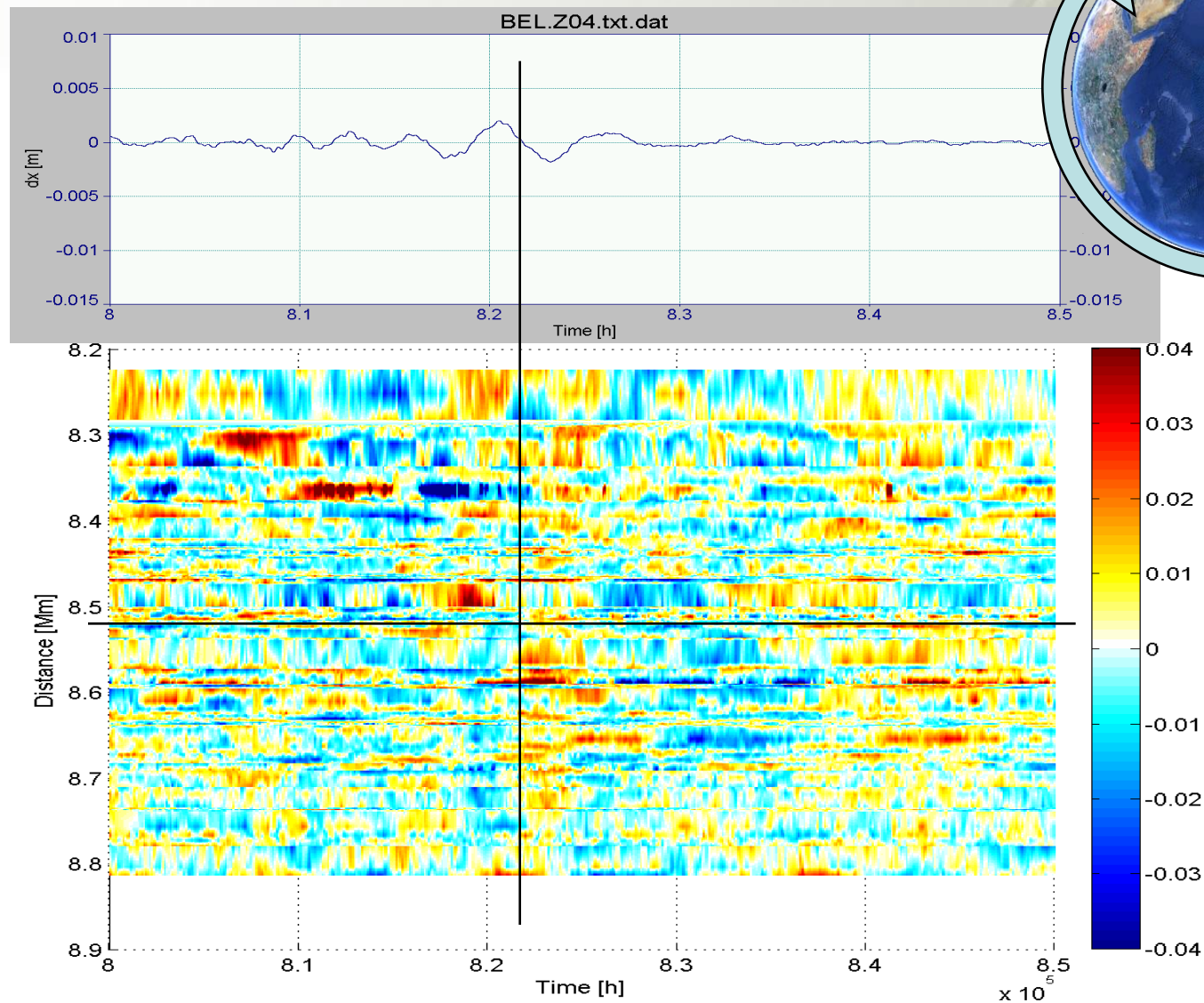
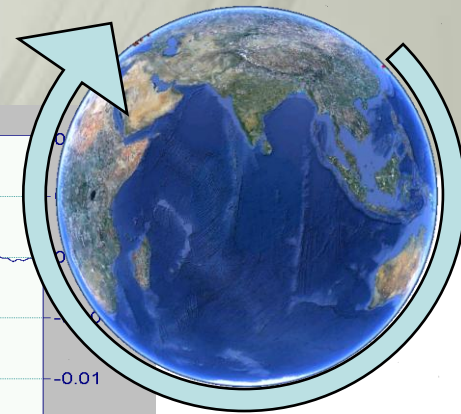
Wyniki opracowania (h)



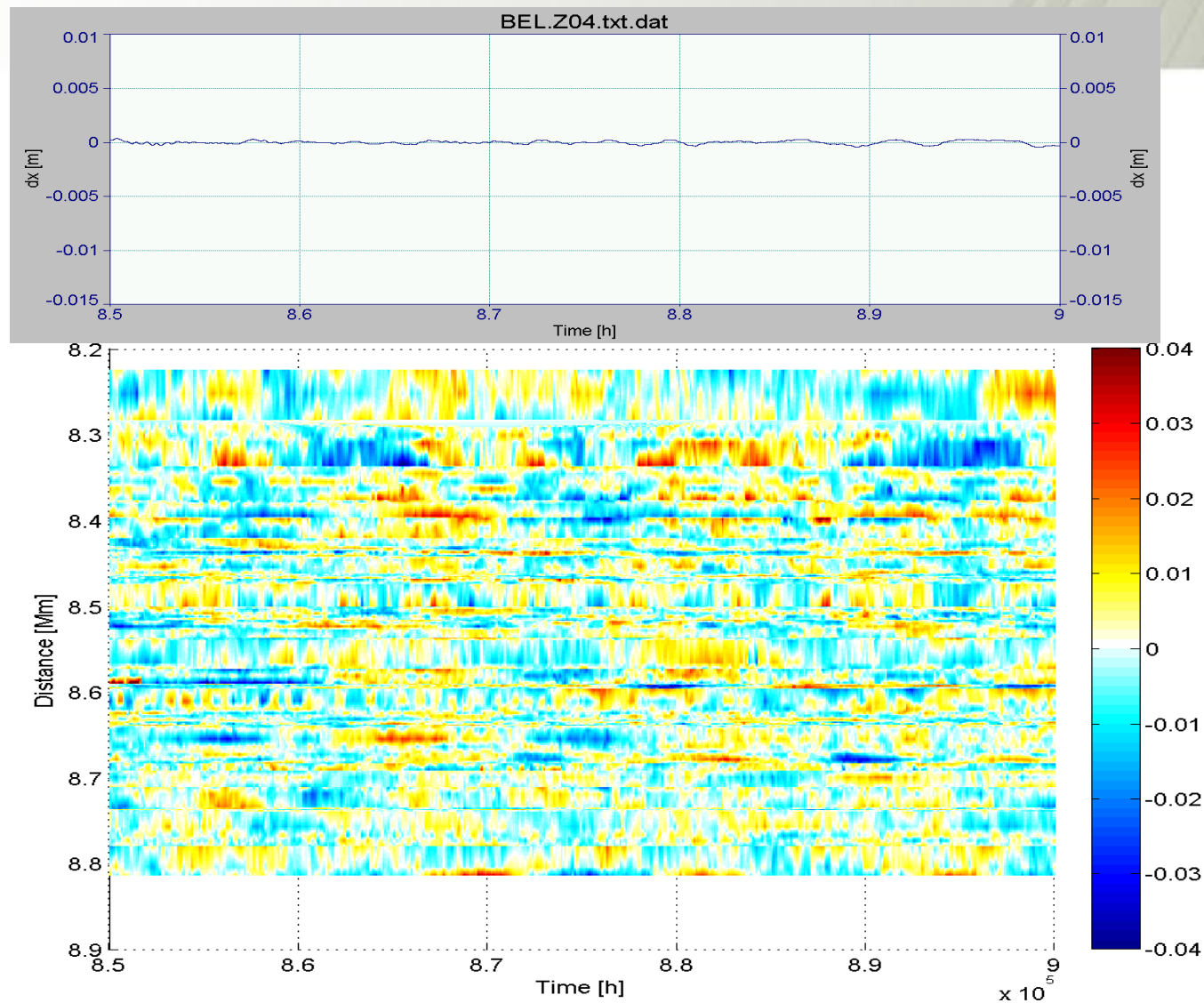
Wyniki opracowania (h)



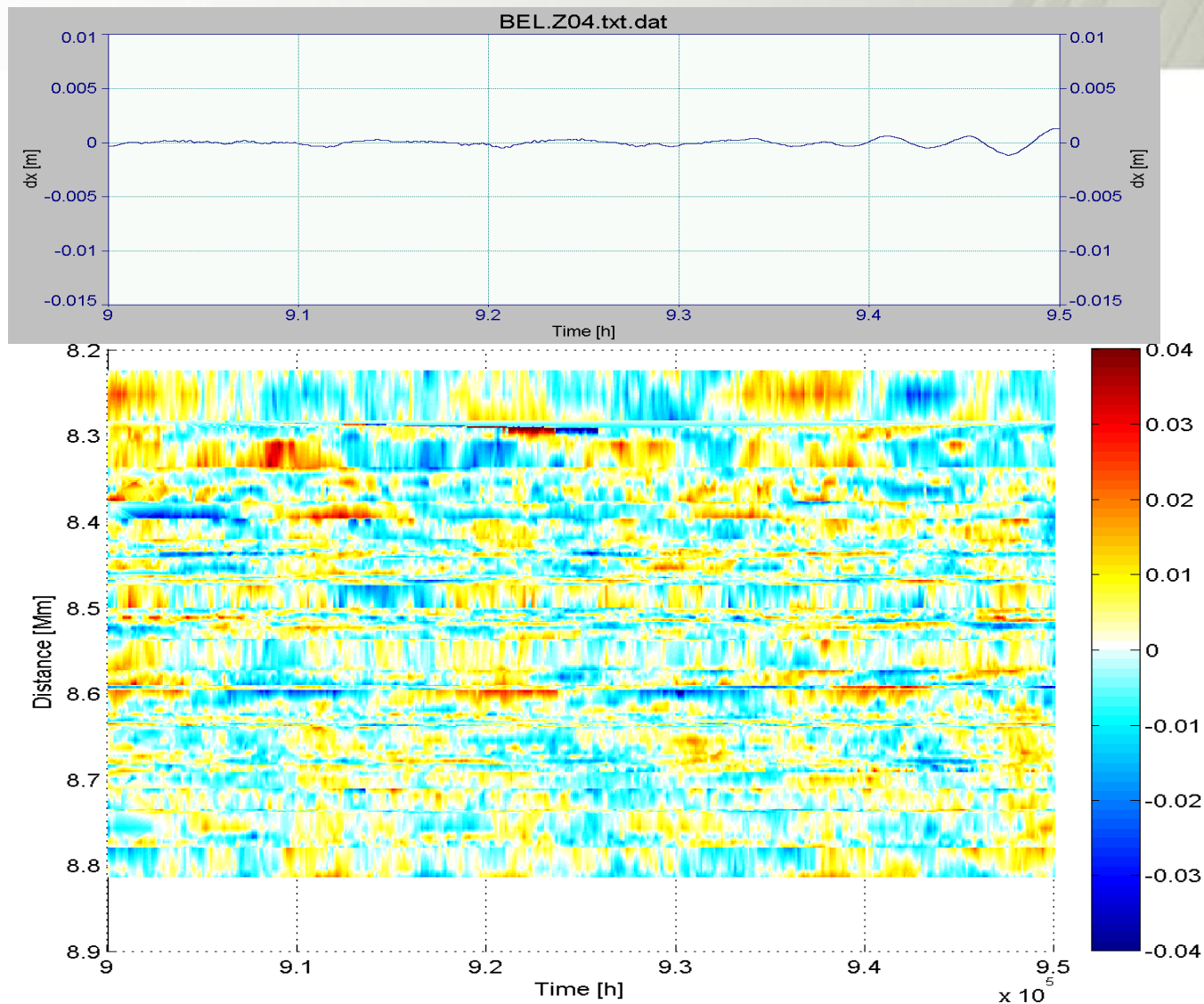
Wyniki opracowania (h)



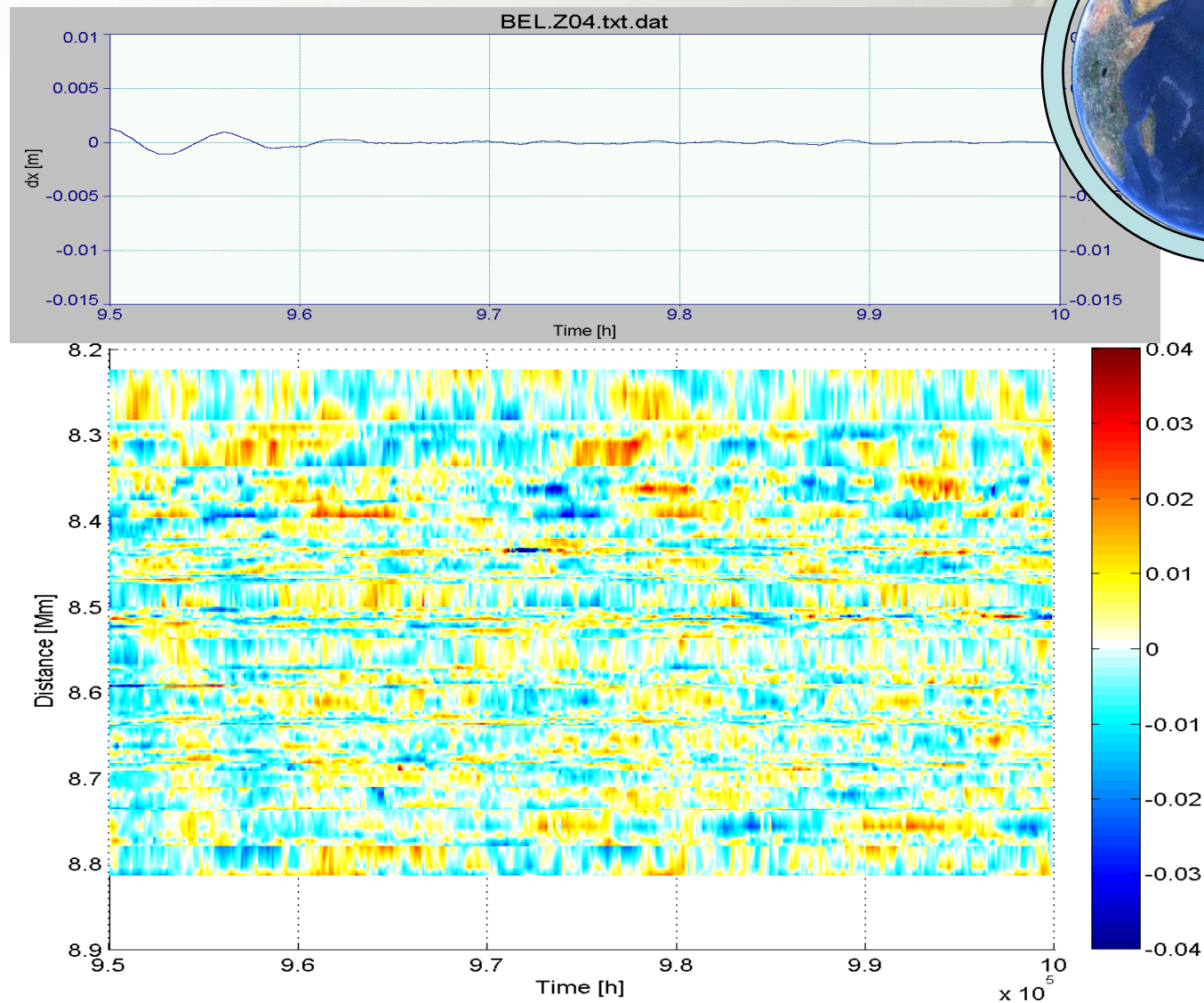
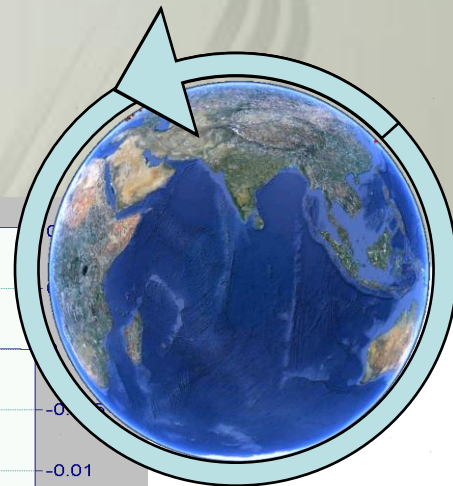
Wyniki opracowania (h)



Wyniki opracowania (h)



Wyniki opracowania (h)





Podsumowanie

- obserwacje odstające
- modele jonosfery i troposfery
- wpływ konfiguracji satelitów, wielotorowość
- filtrowanie szumów



AGH UNIVERSITY OF SCIENCE
AND TECHNOLOGY

Wykorzystanie systemu ASG-EUPOS do badania zjawisk geodynamicznych na przykładzie trzęsienia Ziemi w rejonie Honsiu, Japonia

Jacek Kudrys

**Wydział Geodezji Górniczej i Inżynierii Środowiska AGH
Katedra Geomatyki**